

Louisa County Conservation Board
FY 10
Annual Report
July 1, 2009 – June 30, 2010

LOUISA COUNTY CONSERVATION BOARD

ANNUAL REPORT

July 1, 2009 to June 30, 2010

TO: The Louisa County Board of Supervisors

Following is the annual report of the Louisa County Conservation Board for the fiscal year (July 1, 2009- June 30, 2010) as prescribed in Chapter 350.3 of the Code of Iowa (1993).

FY 10 at a Glance

- Camping numbers reached an all-time high
- Iowa Science & Math Education summer program held
- Began work on the Louisa Interpretive Center at Langwood
- Held an Extreme Makeover at Flaming Prairie Park and completed electrical upgrades
- Held the 2nd Annual Iowa River Cleanup
- NCCC AmeriCorps Program helped with natural resource management and environmental education activities for six weeks

Board Roster

The Louisa County Conservation Board members who served during this reporting period were:

Name	Title	Expiration Date	Meetings Attended
Dave Schweitzer	Member	Dec 31, 2009	3
Jay Schweitzer	Vice-chair	Dec 31, 2010	13
Brad Moss	Secretary/Treasurer	Dec 31, 2011	11
Roger Edwards	Chair	Dec 31, 2012	10
Stanley Staats	Member	Dec 31, 2013	12
Sherry Humphreys	Member	Dec 31, 2014 (began 1/1/2010)	6

Meetings Held

The board held 12 regular meetings and one special meeting during the year. The minutes of the meetings are on file at the Louisa County Conservation Board Office, 12635 County Road G56, Wapello, Iowa, 52653.

Louisa County Conservation Board Staff

The Louisa County Conservation Board maintained seven permanent staff positions and four seasonal positions. Three “on-call” staff positions help with staffing for ropes facilitation and substitute Toolesboro interpretation. Funding from the Iowa Science and Math Education Program (2009) allowed hiring an additional employee for summer youth programming.

The LCCB continued to participate in the Eastern Iowa Conservation Alliance AmeriCorps project. Under the project, the LCCB sponsored one 12-month and two 6-month AmeriCorps members during 2009-10. A grant from the Corporation for National Service provided cost share for the program.

In March 2010, an 11-member NCCC AmeriCorps crew was assigned to Louisa County Conservation Board for six weeks. The crew worked 40-hour weeks helping with controlled burning and environmental education.

In addition, the conservation board used the services of volunteers and community service workers.

LCCB Permanent Employees for FY 10

Name	Title	Anniversary Date
Julie Ohde	Executive Director	06/1985 (PFT)
Katie Hammond	Naturalist/Langwood Director	03/2000 (PFT)
Kathy Dice	Naturalist	01/2001 (PFT – 80 %)
Mary Gish	Office Manager	02/2001 (PPT – 70%)
Jeff Snyder	Operations Supervisor	10/2006 (PFT)
Kenny Moore	Park Ranger/Technician	10/2006 (PFT – 80%)
Connie Street	Museum Manager	7/09 – 6/10 (PPT)

LCCB Seasonal, Temporary & On Call Employees for FY 10

Name	Title	Dates Worked
Ernest Gerst	Seasonal maintenance	Summer 09, 10 (SFT)
Rachel Kelley	Toolesboro Assistant	Summer/Fall 09 (SPT)
Katie Walker	Toolesboro Assistant	Summer/Fall 09, 10 (SPT)
Rebecca Beaver	Toolesboro Assistant	Summer/Fall 10 (SPT)
Jenny Gustison	Toolesboro Assistant (Substitute)	Summer/Fall 10 (On-call)
Cindy Klebe	Ropes Facilitator/EE assistant	7/09 – 6/10 (On-call)
Tessa Pugh	Ropes Facilitator/EE assistant	7/09 -6/10 (On-call)
Megan Yotter	Summer youth program assistant	Summer 09 (SFT)

LCCB AmeriCorps Members for FY 10

Name	Service	Dates Enrolled
Ernie Peters	AmeriCorps Natural Resources	07/09 – 08/09
Mitch Schweitzer	AmeriCorps EE member	07/09 – 08/09
Megan Landes	AmeriCorps Natural Resources	07/09 – 08/09
Nate Quarderer	AmeriCorps EE member	09/09 – 06/10
Matt Shutt	AmeriCorps Natural Resources	03/10 – 06/10
Brenda Schwerin	AmeriCorps Natural Resources	03/10 – 06/10

Definitions

PFT: Permanent Full Time (at least 32 hours/week, receives full benefits)

PPT: Permanent Part Time (20-31 hours/week, salaried, receives vacation, sick leave & holidays)

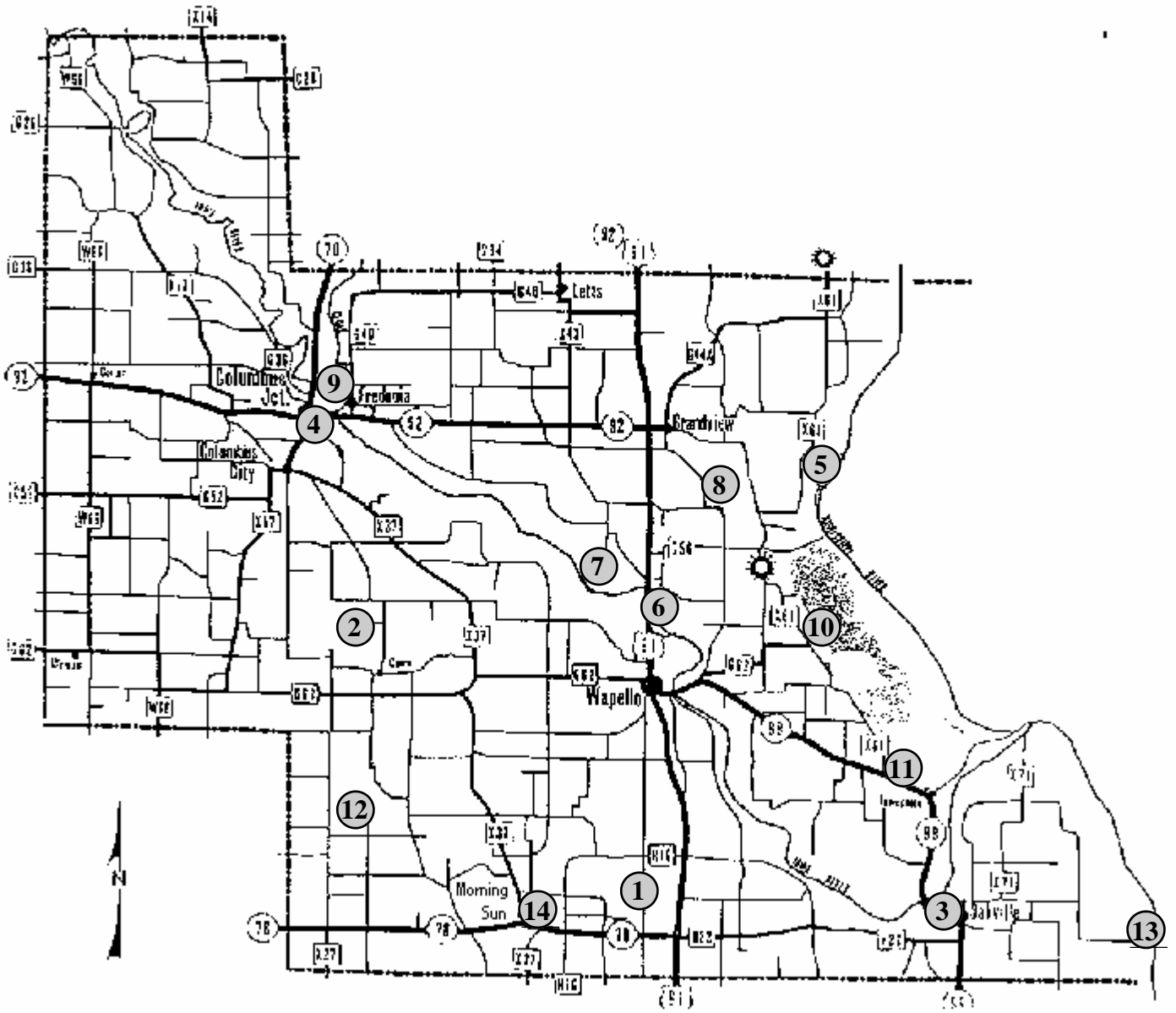
SFT: Seasonal Full Time (works full time seasonally, no benefits)

SPT: Seasonal Part Time (works part time, seasonally, no benefits)

On-Call: works only when needed

Area Inventory

The Louisa County Conservation Board owns and/or manages a total of 14 areas, totaling approximately 2290 acres for outdoor recreation and wildlife benefits. A map and brief description of these areas follows.



Louisa County Conservation Board Areas

Map number	Area 911 Address	Acreage	# Camping sites	Electricity	Water	Toilets	Picnicking	Hiking Trails	Equestrian Trails	Fishing, R-River L=lake or pond	Boating - motor	Boating - electric or no motor	Boat Ramp	Hunting - Forest	Hunting - Upland	Hunting - Wetland
1	Baird Timber 2851 "K" Ave	18												●		
2	Cairo Woods Wildlife Area 9032 "S" Ave (Main Access)	525						●	*	L		●		●	●	
3	Cappy Russell Access 6444 West Cty Rd X-71	5					●			R	●	●	●			
4	Chinkapin Bluffs Recreation Area 14198 "R" Ave	398			●		●	●						●	●	
5	Flaming Prairie Park 14624 Cty Rd X-61	71	20	●	●	●	●			L	●	●	●			
6	Highway 61 Access 10726 Highway 61	1								R	●					
7	Indian Slough Wildlife Area 1225 "L" Avenue (Main Access)	1100							*	R, L		●		●	●	●
8	Langwood Education Center 14001 "H" Ave	90	For group use by reservation only													
9	River Forks Access 1001 Main St, Fredonia	5					●			R	●	●	●			
10	Snively Access 9426 Cty Rd X-61	6	34	●	●	●	●			L	●					
11	Toolesboro Indian Mounds & Museum 6568 Toolesboro Rd	5			●	●	●									
12	Virginia Grove Recreation Area** 20406 55th St	106	11	●	●	●	●	●		L		●		●	●	
13	Wykert's Landing 1714 20th St	0.5								R	●	●	●			
14	Hoover Nature Trail Hwy 78, Morning Sun							●								

* Open May 21 to September 15

** Includes Baird Grove Unit

Multi-use Recreational Areas

Chinkapin Bluffs Recreation Area - 398 acres

Location: One mile southeast of Columbus Junction, Iowa

Date Acquired: Original 262 acres acquired April 16, 1992; 136-acre addition acquired September 12, 2002; Hoover Nature Trail acquired December 2005

Current management: Multi-use recreation area

Existing facilities: Shelter, several picnic tables, grills, water, composting toilet, overlook deck, playground and trails. The Hoover Nature Trail runs adjacent to the property providing additional biking, hiking and other trail opportunities.

Improvements this fiscal year: none

Planned Improvements: Landscaping around the restroom will be completed along with finishing trails, and a sidewalk addition. Changes to the Hoover Nature Trail may be made to prevent overflow on the trail and flooding at the fairgrounds. Location for a primitive campground will be investigated.

Documented use: There were 20 shelter reservations for the year (up from 16 in FY 09) with more than 660 visitors recorded as well as 145 participants at four LCCB school and public programs.

Flaming Prairie Park - 72 acres

Location: Approximately 15 miles south of Muscatine, Iowa

Date Acquired: Sept. 26, 1978

Current management: For wildlife habitat, camping and other recreational use. Hunting is prohibited.

Existing facilities: Two shelters, camping & picnicking facilities, two latrines, and natural playground equipment.

Improvements this fiscal year: Replaced all electrical hookups in north campground. Removed electric hookups from south campground. Held a makeover day with intensive tree and shrub removal around the south end of the wetland, clearing of an access point to the wetland and addition of a natural playground

Planned Improvements: none

Documented use for this area: Although complete attendance figures are not available, 300 camper use days were recorded, about the same as FY09. The park was closed from about March to June, 2010 due to high waters. There was one LCCB sponsored school program at the park.

Snively Access Campground - 6 acres

Location: On the west bank of Odessa, approximately four miles east of Wapello, Iowa

Date Acquired: The original 25-year management lease was signed with the State of Iowa on May 5, 1985. The lease was updated and extended for another 25 years in June, 2007.

Current management: For camping and picnicking

Existing facilities: 30 gravel campsites with electric, table & grill, access road, latrine, water

Improvements this fiscal year: None

Planned Improvements: Water service may be added to the north end. A removable fishing dock may be installed in FY 11.

Documented use: Although complete attendance figures are not available, 2978 camper use days were recorded, up 20% over FY 09. There was also one public program with 15 participants. Though numbers are not documented, day use of the area has increased.

Virginia Grove Recreation Area - 106 acres

Location: Approximately 10 miles southwest of Wapello, Iowa

Date Acquired: January 7, 1975 (main tract only)

Current management: For multi-use recreation, including hunting, fishing, camping, picnicking, hiking and similar uses

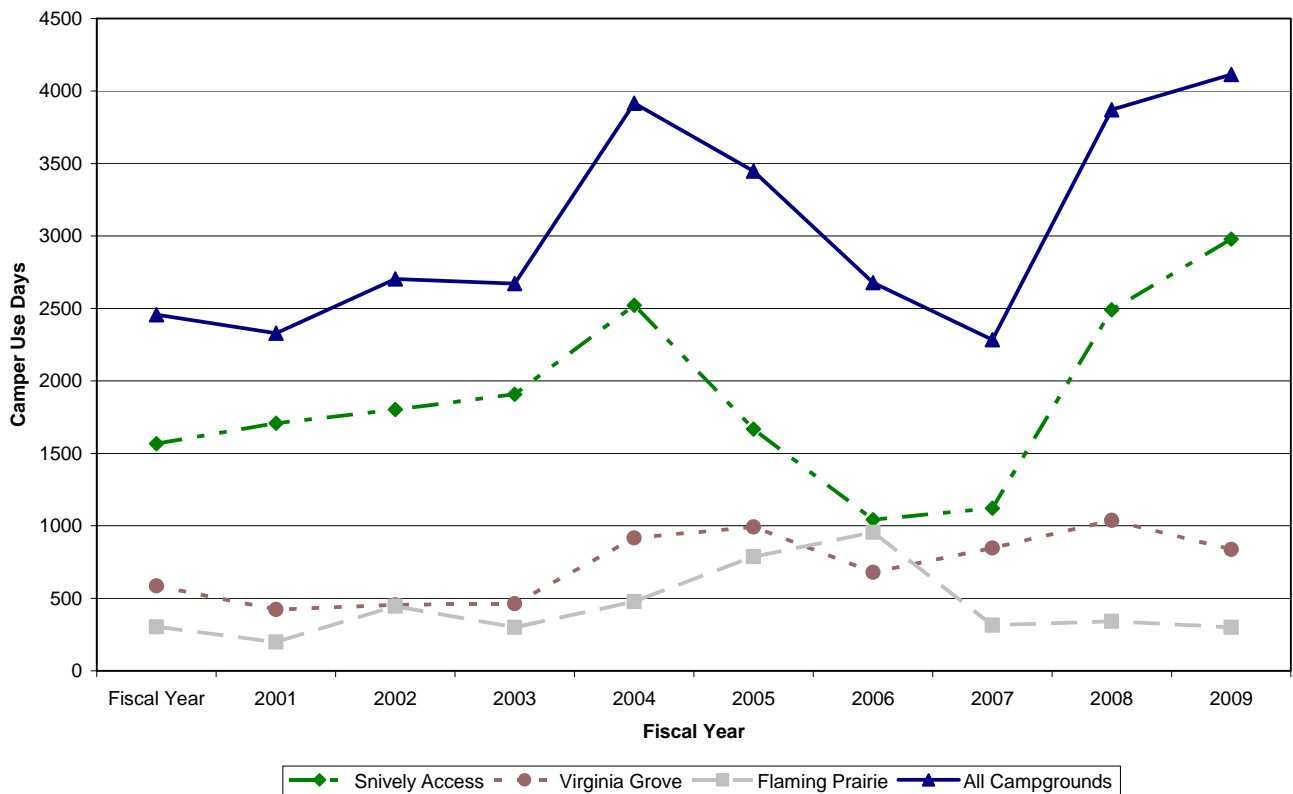
Existing facilities: Two shelters, 11 camp sites (all with access to electricity), latrine, playground equipment, pressurized water well, electrical service, handicapped accessible fishing dock and country schoolhouse. A five-acre pond is also located on the area.

Improvements this fiscal year: No major improvements.

Planned Improvements: Capitol improvement plan will be developed.

Documented use: Complete attendance figures are not available; however, 837 camper-use days were recorded, down from last year's all-time high of 1038. Other documented use for this area includes three shelter reservations with 80 recorded visitors as well as 430 participants at nine LCCB sponsored programs.

Camper Use Days at LCCB Campgrounds, FY 01 to FY 10



Wildlife Areas

Baird Timber - 18 acres

Location: Five miles south of Wapello, Iowa

Date Acquired: July 6, 1983

Current management: For wildlife purposes and timber improvement management

Existing facilities: Small parking lot

Improvements this fiscal year: None

Planned Improvements: None

Cairo Woods Wildlife Area - 525 acres

Location: Five miles southeast of Columbus Junction, Iowa

Date Acquired: Various dates ranging from March 16, 1985 - June 1, 1987

Current management: For wildlife habitat purposes and compatible recreational uses such as hunting, hiking and berry picking. Some trails are open to equestrian use from May 21 to September 15 each year.

Existing facilities: Three rocked parking lots and trails, including trails marked for equestrian use

Improvements this fiscal year: none

Planned Improvements: Removal of interior fencing is planned. Updating of timber stand improvement plan and habitat management plans are needed.

Indian Slough Wildlife Area - 1,049 acres

Location: Three miles northwest of Wapello, Iowa

Date Acquired: From Nov. 25, 1985 to May 11, 1988

Current management: For wildlife habitat purposes and compatible recreational uses such as hunting, fishing, trapping, and hiking.

Existing facilities: Water control structures, access roads, four parking lots and mowed trails

Improvements this fiscal year: None

Planned Improvements: Replacement of water control structure.

River Accesses

Cappy Russell Access - 5 acres

Location: On the Iowa River approximately one-half mile west of Oakville, Iowa

Date Acquired: Aug. 1, 1973

Current management: Maintained as a boat access

Existing facilities: Concrete boat ramp, graveled parking lot

Improvements this fiscal year: None

Planned Improvements: Addition of water trail access signs.

Highway 61 Fishing Access - 1 acre

Location: Approximately two miles north of Wapello, Iowa on US Highway 61

Date Acquired: October 5, 1989

Current management: Maintained as an access to the Iowa River for fishing. No boat ramp is provided, but light boats can be carried from the parking lot.

Existing facilities: Parking lot and access road

Improvements this fiscal year: none

Planned Improvements: Addition of water trail access signs.

River Forks Access - 5 acres

Location: The junction of the Iowa and Cedar Rivers, one mile east of Columbus Junction, Iowa

Date Acquired: Aug. 1, 1973

Current management: Maintained as a boat access, with primitive camping allowed as well as picnicking and fishing.

Existing facilities: Concrete boat ramp, parking lot, access road, grill

Improvements this fiscal year: none

Planned Improvements: Addition of water trail access signs.

Wykert's Landing – less than 1acre

Location: On the Mississippi east of Oakville, Iowa

Date Acquired: A ten-year Recreation Lease with the Army Corps of Engineers began March 2, 2002

Current management: Maintained as a boat access

Existing facilities: Gravel boat ramp, parking lot and access road

Improvements this fiscal year: none

Planned Improvements: None

Other Areas

Hoover Nature Trail

Location: Property located from north of Columbus Junction to South of Morning Sun; Developed sections at Chinkapin Bluffs and east side of Morning Sun.

Date Acquired: December 2005

Current management: Hiking and biking trails; some areas undeveloped

Existing facilities: one parking area at Chinkapin Bluffs

Improvements this fiscal year: None

Planned Improvements: Signage improvements. May seek development of additional sections at some time. May look at acquiring connecting pieces.

Maintenance Shed - 1 acre

Location: Just outside the west city limits of Wapello, Iowa

Date Acquired: May 4, 1977

Current management: For storage of equipment, materials and as a work site for the field crew

Existing facilities: An equipment storage and work shed, a small storage shed, and an outside nursery cooler

Improvements this fiscal year: None

Planned Improvements: Additional shed is needed.

Toolesboro Indian Mounds and Museum - 6 acres

Location: Approximately 10 miles southeast of Wapello, Iowa

Date Acquired: Annual agreements with State Historical Society of Iowa started on May 19, 1990

Current management: As a national historic site for the preservation and exhibition of the unique cultural history found there

Existing facilities: Two well-preserved burial mounds, a visitor center and a small, restored prairie site

Improvements this fiscal year: None.

Planned Improvements: Work on the prairie renovation will continue. Plan to continue offering at least one public program per year. Will work with the SHSI to improve marketing of the area.

Documented Use: Road construction affected visitor numbers in FY 10 with the roads leading to the museum closed for several weeks. Over 699 visitors from 24 states and two foreign countries were documented at the site in FY 10, down slightly from last year (which was affected by flooding). Visitors included 280 from school groups and 67 from other tour groups. In addition, two public programs were held at the site with 98 participants.

Langwood Education Center - 92 acres

Location: Three miles east of Grandview, Iowa

Date Acquired: June 1, 2000

Existing facilities: Enclosed lodge with wood-burning stove and air conditioning, unheated two-story A-frame dormitory, bathhouse with showers and restrooms, electrical hookups for campers, teams course, high ropes challenge course, septic system, boathouse, canoes, fishing dock, bird viewing blind.

Current management: For environmental education, outdoor recreation, and challenge programming. Youth group use is encouraged, particularly in conjunction with outdoor education programming, either through the conservation board or other appropriate agency.

Improvements this fiscal year: No major improvements

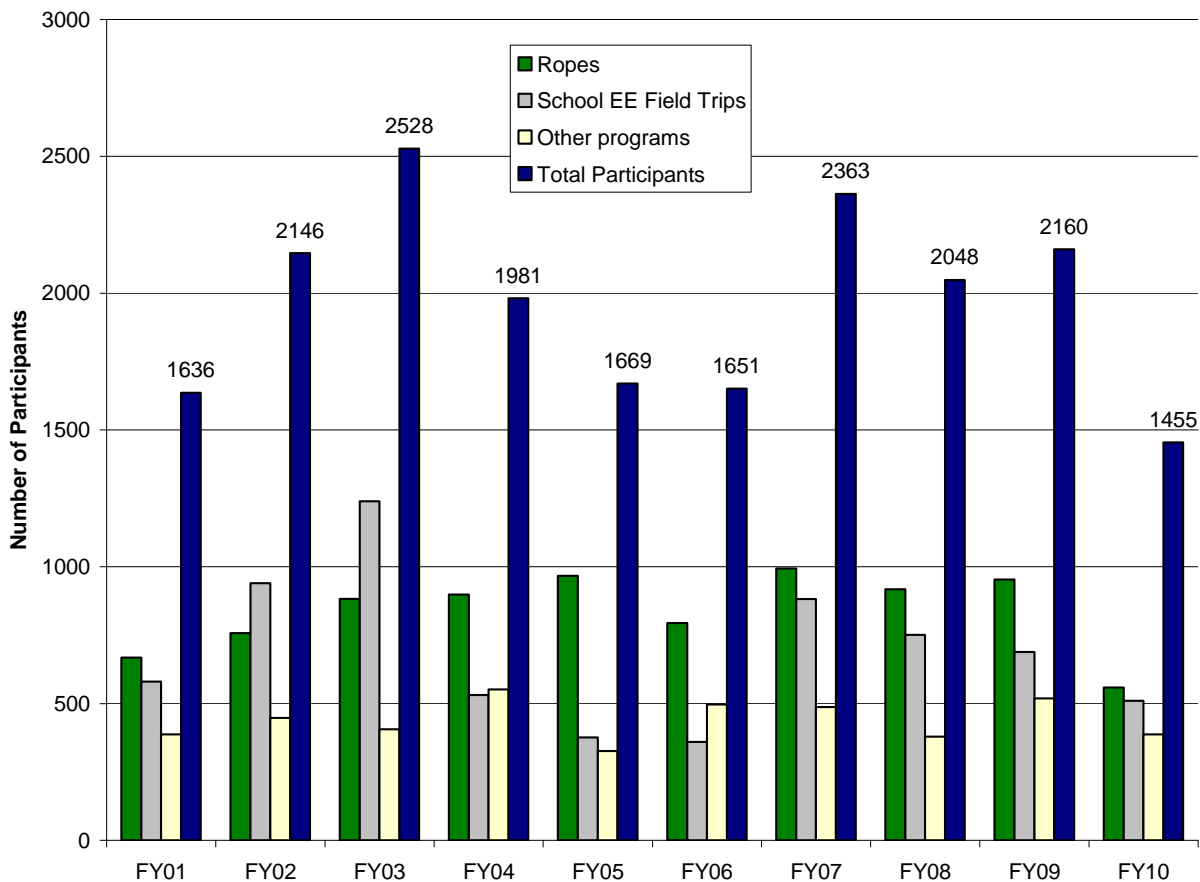
Planned Improvements: None planned.

Documented use: The number of participants using Langwood for events (facility use) dipped to 1542 from last year's all time high of 1896. The number of people attending programs at Langwood was also lower with 1455 participants attending 72 programs. Graphs on the following page show Langwood use over the past eight years.

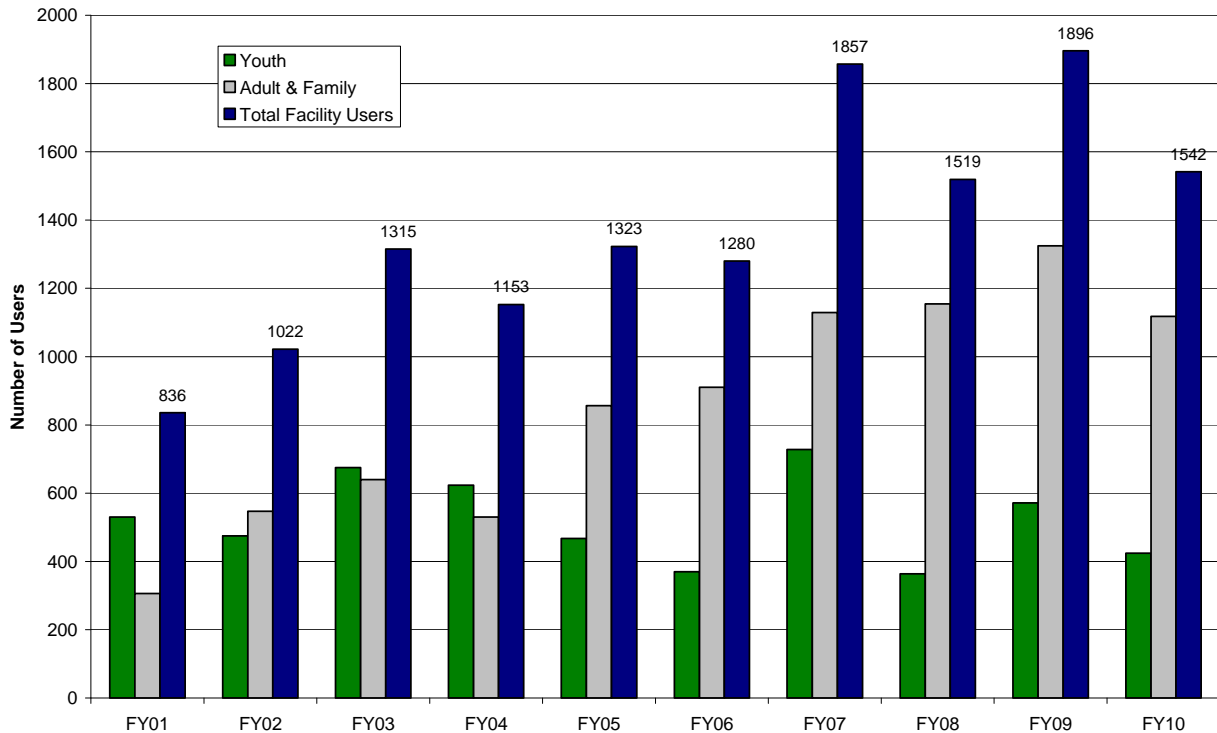
The number of participants using the challenge course decreased dramatically to 558, reflecting a lack of funding for youth and school groups to attend such programs.

Revenue for facility use, ropes course, public programs and field trips was lower than FY09, again reflecting the reduced ropes course use. Langwood visitors continue to come mainly from outside Louisa County – with 57% of facility groups and 89% of challenge course users coming from out of county.

Langwood Program Participants, FY01 - FY10



Langwood Facility Users, FY01 - FY10



Louisa Interpretive Center at Langwood Project

Though planning for the Louisa Interpretive Center (LIC) began many years ago, the project started in earnest during FY10. A Federal Highway Administration Scenic Byways grant was secured in FY09 to fund design work, preliminary engineering, grading and surface restoration.

Accomplishments on the project during FY10:

1. Shive-Hattery, Inc selected as consultant for the project.
2. The LIC Advisory Committee was formed with many members from the Langwood Advisory Committee staying on and several new members from the community added.
3. Archeological studies completed.
4. Soil testing completed.
5. Preliminary engineering and initial design concepts presented to advisory committee for comment and review.

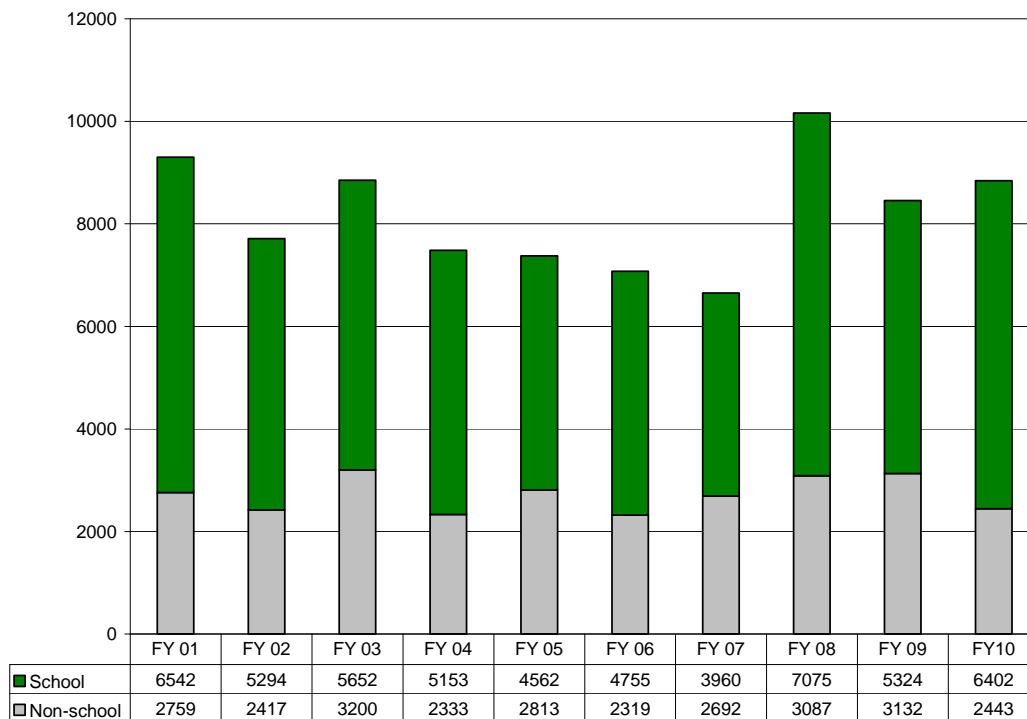
The project will continue into FY12, with completion anticipated in fall 2011. Milestones for FY11 will include:

1. Donation of project land from Tri-Rivers Conservation Foundation to LCCB
2. Completion of preliminary engineering and design concepts.
3. Grading and construction of roads, wetland and pond, as well as mounds for the building and outdoor exhibit areas.
4. Gravel surface applied to newly constructed roads.
5. Land restoration – may not be completed until Fall 2011.

Environmental Education and Public Relations

The conservation board conducted 416 environmental education programs in FY 10, with a total attendance of 8,845 which represents a slight increase in participants over FY 09.

Participants in Environmental Ed Programs, FY 01 to FY 10



Publicity & Marketing

- The staff helped edit, design, write and distribute four issues of the “Naturally Louisa County Newsletter.” The newsletter is a cooperative effort between Tri-Rivers Conservation Foundation and the LCCB. It also includes information from the Iowa Department of Natural Resources, Louisa County Soil and Water Conservation District, Port Louisa National Wildlife Refuge and local non-governmental conservation organizations. The newsletter was both offered online and via email. Just over 1400 subscribers receive the newsletter in the mail while another 300+ receive it via email. The newsletter is also available on the website.
- A website was maintained for both LCCB and the Naturally Louisa County campaign. LCCB is also part of the MyCountyParks.com website.
- News releases were distributed to local media as well as post-publicity photos and articles.
- In addition, several LCCB events and programs were covered as news stories by the local media.
- LCCB continued to be a part of the Naturally Louisa County marketing campaign

Youth Programming

- The LCCB continued summer nature camp programs. An Outdoor Adventure Club for middle school aged children was continued in 2010 with grant funding from Community Foundation of Louisa County.
- A grant from the Iowa Math and Science Education program provided additional summer programming for youth in the summer of 2009.
- The LCCB continued to provide a Summer Rec program for the city of Morning Sun.
- The LCCB continued to provide soil and water programs to county schools for the Louisa County Conservation District.
- The LCCB continued to provide organization of two hunter safety courses with funding for meals provided by MidAmerican Energy; Monsanto Off the Job Safety Committee and American Legion, Post 100.

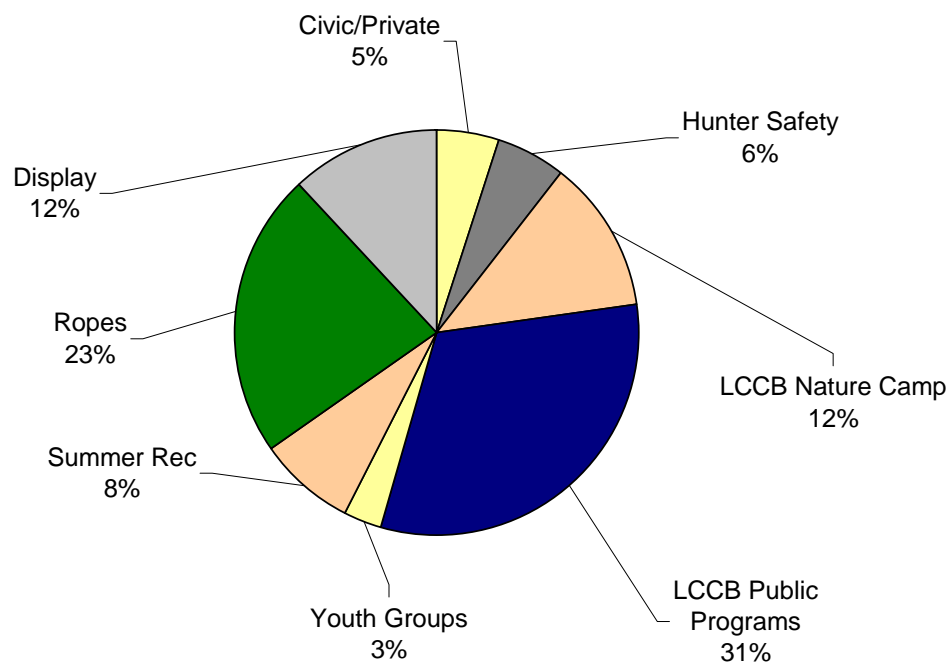
School Programming

- The total number of students and teachers at LCCB environmental education programs was 6,402, up from FY09 due mainly to participation in summer school programming at two schools.

Other Programs

- The number of participants in non-school programs decreased slightly to 2,443, mainly due to a reduction in the number of high ropes programs. Many youth and school groups are struggling with funding for “extras” like the ropes course.
- Had a display at the Louisa County Fair in partnership with the Louisa County Soil & Water Conservation District. Held public programs including several paddling trips, a youth pheasant hunt, Halloween Hike, Fish n Fun Day, Ice fishing, Full Moon Hike, wild edibles hikes, Easter Antler Hunt and an Earth Day River Cleanup.
- The Louisa Solid Waste Commission contracted with the LCCB to provide solid waste education to Louisa County residents.
- The LCCB staff provided environmental education training for EICA AmeriCorps members.

FY 010 Non-School Programs - Number of Participants (2,433 total)



Cooperative Programs and Agreements

- A. **Iowa Department of Natural Resources** - An agreement was continued for management and development of Snively Access. A fisheries management agreement was continued for the Virginia Grove and Langwood ponds.
- B. **Army Corps of Engineers** - The recreational leases at Flaming Prairie Park and Wykert's Landing were continued.
- C. **Louisa County Historical Society** – The LCCB continued an agreement to provide a museum manager for the Louisa County Heritage Center.
- D. **City of Morning Sun** - Continues to provide a summer recreation program in Morning Sun.
- E. **State Historical Society of Iowa** – The museum management and interpretation agreement (annual) for the Toolesboro Historic Site was continued.
- F. **Louisa County Soil & Water Conservation District** - Continued an environmental education services agreement for presenting soil and water conservation programs in area schools.
- G. **Louisa County Solid Waste Commission** – The LCCB continued providing solid waste education through a contract with the LCSWC.
- H. **Tri-Rivers Conservation Foundation** - Continued an informal agreement to cooperate on fundraising efforts and support of the LCCB mission.
- I. **Eastern Iowa Conservation Alliance AmeriCorps Program** – Continued to participate in a cooperative program with 10 other eastern Iowa conservation boards to administer an AmeriCorps program.
- J. **Naturally Louisa County** – continued with this effort to market Louisa County's natural resources to state, local and regional visitors. Partners include Iowa Department of Natural Resources, Port Louisa National Wildlife Refuge and Louisa Development Group.
- K. **U.S. Fish & Wildlife Service and The Nature Conservancy** – Continued with agreements to share prescribed fire resources and personnel.

Projects Planned For FY 2011

- A. Development on existing county areas may include:
 - 1. Improvement of areas currently in native grass plantings.
 - 2. Development of habitat management plan for wildlife areas.
- B. Other plans for FY 11 may include:
 - 1. Continued work on the Louisa Interpretive Center at Langwood
 - 2. Partner with other organizations to complete development of the Iowa River Water Trail
 - 3. Partner with area residents and organizations to work on a Louisa County trail plan
 - 4. Pursue acquisition of a boat landing on the Iowa River in the Gladwin Area
 - 5. Begin work on a new Strategic Plan (current plan expires in FY12).

Attachments

Financial Report

Approved by the Louisa County Conservation Board at the meeting on September 14, 2010

Board Chair

Financial Report--General Basic Fund

General Basic Revenue		
FEMA Flood 08		\$ 3,653
Donations from Private Sources		
Total		\$ 3,659
Misc donations	\$ 584	
CFLC - NCCC	\$ 2,075	
CFLC - Outdoor Adventure	\$ 1,000	
Misc. State Grants Total		\$ 4,712
Iowa Science & Math Ed Grant	\$ 4,712	
Toolesboro Contract		\$ 13,533
Misc.Federal Grants		\$ 19,101
AmeriCorps grant	\$ 19,101	
Camping Fees		\$ 12,345
Snively		
Flaming Prairie		
Virginia Grove		
Camping Coupons		
Shelter Fees		\$ 575
Land Rent		\$ 16,586
Equipment Rent		\$ 215
Louisa County Historical Society Agreement		\$ 9,383
Miscellaneous		\$ 2,297
Miscellaneous Total	\$ 2,297	
Sales of surplus equipment		\$ 4,068
Langwood		\$ 9,123
Rental Fees	\$ 3,927	
Ropes Course	\$ 5,056	
Field trip fees	\$ 140	
Environmental Education		\$ 7,756
Louisa Regional Solid Waste		
SWCD Program	\$ 1,100	
Summer Rec Morning Sun	\$ 1,487	
Hunter Safety	\$ 312	
Halloween Hike	\$ 423	
Day Camp Fees	\$ 3,360	
Toolesboro Donations	\$ 217	
Nestbox sales	\$ 105	
Miscellaneous	\$ 53	
Other Public Programs	\$ 699	
General Basic Tax Support		\$ 287,312
Total Revenue		\$ 394,318

General Basic Expenditures

Salaries

Julie Ohde (fulltime)	\$	45,989
Katie Hammond	\$	32,192
Kathy Dice (.8 FTE)	\$	27,040
Jeff Snyder	\$	34,767
Kenny Moore (.8 FTE)	\$	23,913
LCHS muesum manager	\$	6,461
Summer Program Aide	\$	3,411
Seasonal Maint. Staff	\$	6,811
Americorps Park Staff	\$	13,108
Americorps EE	\$	13,371
Mary Gish (3/4 time)	\$	22,004
Toolesboro Staff	\$	4,347
Weekend Ropes	\$	236
FICA	\$	17,287
IPERS	\$	13,095
Health Insurance	\$	9,427
Life Insurance	\$	82

Administration

Office Supplies	\$	7,000
Environmental Ed	\$	3,920
Official Publications	\$	61
Postage	\$	807
Mileage	\$	504
Telephone	\$	2,281
School of Instruction	\$	2,085
Legal Services	\$	1,831
Dues/Memberships	\$	2,428
Licenses, Testing, Permits	\$	318
Property Taxes	\$	996

Operations & Maintenance

Fuel	\$	11,225
Excise Tax	\$	589
Minor Equip/Hand Tools	\$	1,308
Uniforms	\$	325
Uniforms/Safety - AmeriCorps	\$	429
School of Instruct--Americorps	\$	436
Electricity	\$	6,350
Motor Veh Equip / Repair	\$	3,113
Operating Equip Repair	\$	3,136
Equipment Insurance	\$	8,561
Worker's Comp	\$	4,021
Park Service (all but LW, TB)	\$	7,888
Park Service Toolesboro	\$	13
Park Service Langwood	\$	4,719
Wildlife Habitat	\$	190

Transfer to Conservation Reserve \$ 46,000

Total General Basic Expenditures \$ **394,073**

**Financial Report
Land Acquisition (Conservation Reserve)**

Balance 7/1/09	\$ 69,627
Revenue	
Transfer from General Basic	\$ 46,000
Expenditures	
Misc Improvements	\$ 1,870
Flaming Prairie Makeover	\$ 1,415
Equipment	\$ 26,181
Balance in Conservation Reserve 6/30/10	\$ 86,161

**Financial Report –
Resource Enhancement and Protection (REAP)**

Balance 7/1/09	\$ 45,871
Revenue	
State Payment	\$ 15,721
Interest	\$ 15,389
	\$ 332
Expenditures	
Campground Improvements	\$ 10,124
	\$ 10,124
Balance 6/30/10	\$ 51,468

**Financial Report –
Louisa Interpretive Center Project**

Revenue	
Will come as reimbursement in FY11	
Expenditures	
Design, archeology & soil testing	\$ 63,553
	\$ 63,553