

# Louisa County Conservation Board

## FY 09

### Annual Report

July 1, 2008—June 30, 2009



# LOUISA COUNTY CONSERVATION BOARD

## ANNUAL REPORT

July 1, 2008 to June 30, 2009

**TO:** The Louisa County Board of Supervisors

Following is the annual report of the Louisa County Conservation Board for the fiscal year (July 1, 2008-June 30, 2009) as prescribed in Chapter 350.3 of the Code of Iowa (1993).

### FY 09 at a Glance

- Major flood event in June 2008 affecting most LCCB areas & programs
- New boat ramp constructed at River Forks Access
- Camping receipts reached an all-time high
- Added electric hookups at Langwood
- Iowa Science & Math Education summer program
- Received a grant for beginning work on the Louisa Interpretive Center at Langwood
- Record number of visitors to Langwood Education Center
- NCCC AmeriCorps Program helped with natural resource management and environmental education activities for six weeks

### Board Roster

The Louisa County Conservation Board members who served during this reporting period were:

<b>Name</b>	<b>Title</b>	<b>Expiration Date</b>	<b>Meetings Attended</b>
Doug Brown	Member	Dec. 31, 2008	7
Dave Schweitzer	Member	Dec. 31, 2009	8
Jay Schweitzer	Vice-chair	Dec 31, 2010	14
Brad Moss	Secretary/Treasurer	Dec 31, 2011	11
Roger Edwards	Chair	Dec 31, 2012	9
Stanley Staats	Member	Dec 31, 2013 (began 1/1/09)	5

### Meetings Held

The board held 12 regular meetings and two special meetings during the year. The minutes of the meetings are on file at the Louisa County Conservation Board Office, 12635 County Road G56, Wapello, Iowa, 52653.

## **Louisa County Conservation Board Staff**

The Louisa County Conservation Board maintained six permanent staff positions and four seasonal positions. Three “on-call” staff positions help with staffing for ropes facilitation and substitute Toolesboro interpretation. Funding from the Quad County Decategorization Board (2008) and Iowa Science and Math Education Program (2009) allowed hiring an additional employee for summer youth programming.

The LCCB continued to participate in the Eastern Iowa Conservation Alliance AmeriCorps project. Under the project, the LCCB sponsored one 12-month and two 6-month AmeriCorps members during 2008-09. A grant from the Corporation for National Service provided cost share for the program.

In March 2009, a 10-member NCCC AmeriCorps crew was assigned to Louisa County Conservation Board for six weeks. The crew worked 40-hour weeks helping with controlled burning and environmental education.

In addition, the conservation board used the services of volunteers and community service workers.

### **LCCB Permanent Employees for FY 09**

<b>Name</b>	<b>Title</b>	<b>Anniversary Date</b>
Julie Ohde	Executive Director	06/1985 (PFT)
Katie Hammond	Naturalist/Langwood Director	03/2000 (PFT)
Kathy Dice	Naturalist	01/2001 (PFT – 80 %)
Mary Gish	Office/Museum Manager	02/2001 (PPT – 70%)
Jeff Snyder	Operations Supervisor	10/2006 (PFT)
Kenny Moore	Park Ranger/Technician	10/2006 (PFT – 80%)

### **LCCB Seasonal, Temporary & On Call Employees for FY 09**

<b>Name</b>	<b>Title</b>	<b>Dates Worked</b>
Ernest Gerst	Seasonal maintenance	Summer 08, 09 (SFT)
Emily Wright	Afterschool Program Coordinator	Summer 08 (SFT)
Rachel Kelley	Toolesboro Assistant	Summer/Fall 08, 09 (SPT )
Katie Walker	Toolesboro Assistant	Summer/Fall 08, 09 (SPT )
Bev McCulley	Toolesboro Assistant (Substitute)	Summer/Fall 08, 09 (On-call)
Cindy Klebe	Ropes Facilitator/EE assistant	7/09 -6/09 (On-call)
Tessa Pugh	Ropes Facilitator/EE assistant	7/09 -6/09 (On-call)
Megan Yotter	Summer youth program assistant	Summer 09 (SFT)

### **LCCB AmeriCorps Members for FY 09**

<b>Name</b>	<b>Service</b>	<b>Dates Enrolled</b>
John Griffin	AmeriCorps Natural Resources	07/08 – 08/08
Ernie Peters	AmeriCorps Natural Resources	07/08 – 08/08, 03/09-06/09
Mitch Schwietzer	AmeriCorps EE member	10/08-06/09
Megan Landes	AmeriCorps Natural Resources	03/09 – 06/09

### **Definitions**

PFT: Permanent Full Time (at least 32 hours/week, receives full benefits)

PPT: Permanent Part Time (20-31 hours/week, salaried, receives vacation, sick leave & holidays)

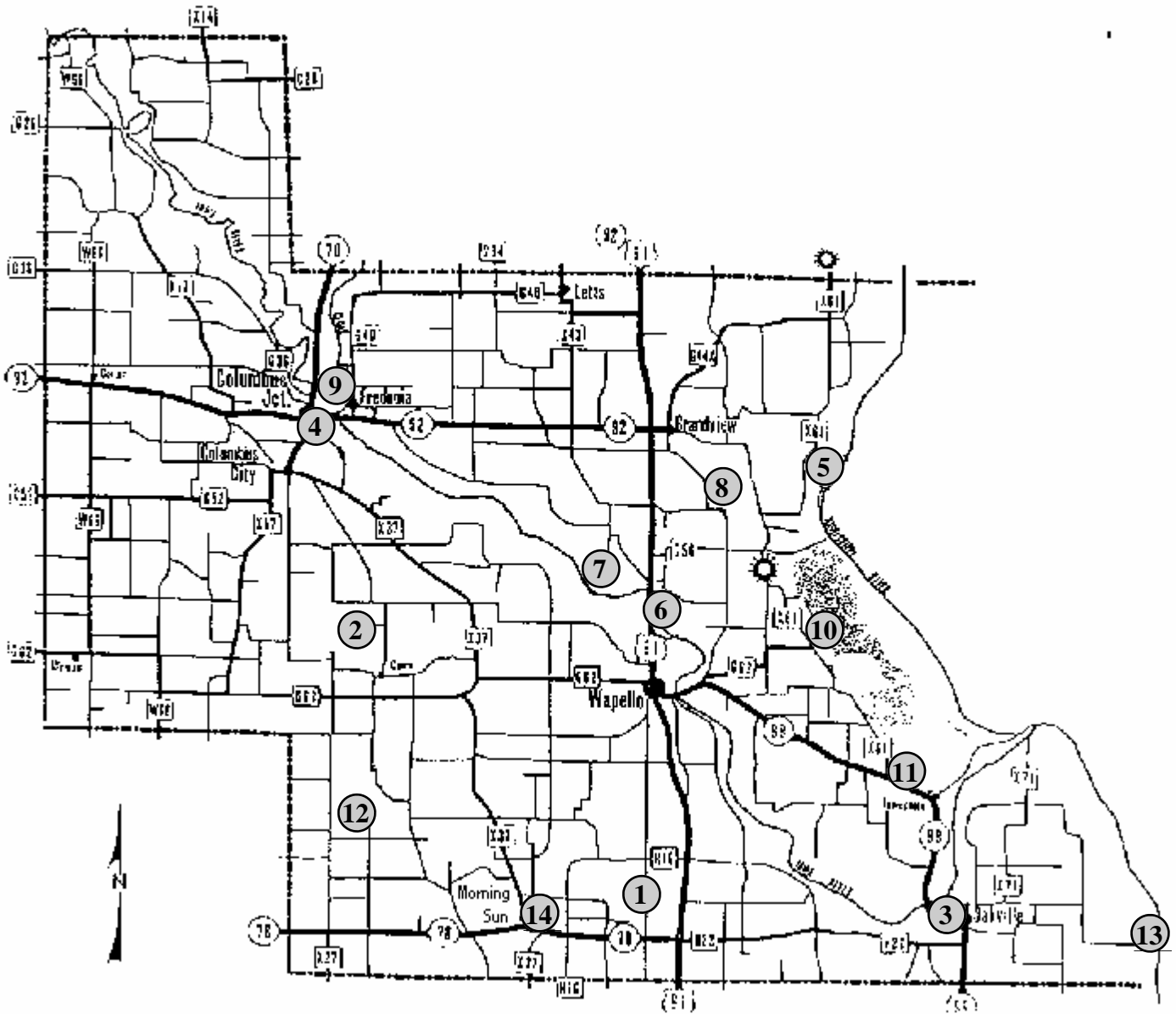
SFT: Seasonal Full Time (works full time seasonally, no benefits)

SPT: Seasonal Part Time (works part time, seasonally, no benefits)

On-Call: works only when needed

# Area Inventory

The Louisa County Conservation Board owns and/or manages a total of 14 areas, totaling approximately 2290 acres for outdoor recreation and wildlife benefits. A map and brief description of these areas follows.



## Louisa County Conservation Board Areas

Map number	Area 911 Address	Acreage	# Camping sites	Electricity	Water	Toilets	Picnicking	Hiking Trails	Equestrian Trails	Fishing, R-River L=lake or pond	Boating - motor	Boating - electric or no motor	Boat Ramp	Hunting - Forest	Hunting - Upland	Hunting - Wetland
1	<b>Baird Timber</b> 2851 "K" Ave	18												●		
2	<b>Cairo Woods Wildlife Area</b> 9032 "S" Ave (Main Access)	525						●	*	L		●		●	●	
3	<b>Cappy Russell Access</b> 6444 West Cty Rd X-71	5					●			R	●	●	●			
4	<b>Chinkapin Bluffs Recreation Area</b> 14198 "R" Ave	398			●		●	●						●	●	
5	<b>Flaming Prairie Park</b> 14624 Cty Rd X-61	71	20	●	●	●	●			L	●	●	●			
6	<b>Highway 61 Access</b> 10726 Highway 61	1								R	●					
7	<b>Indian Slough Wildlife Area</b> 1225 "L" Avenue (Main Access)	1100							*	R, L		●		●	●	●
8	<b>Langwood Education Center</b> 14001 "H" Ave	90	For group use by reservation only													
9	<b>River Forks Access</b> 1001 Main St, Fredonia	5					●			R	●	●	●			
10	<b>Snively Access</b> 9426 Cty Rd X-61	6	34	●	●	●	●			L	●					
11	<b>Toolesboro Indian Mounds &amp; Museum</b> 6568 Toolesboro Rd	5			●	●	●									
12	<b>Virginia Grove Recreation Area**</b> 20406 55th St	106	11	●	●	●	●	●		L		●		●	●	
13	<b>Wykert's Landing</b> 1714 20th St	0.5								R	●	●	●			
14	<b>Hoover Nature Trail</b> Hwy 78, Morning Sun							●								

\* Open May 21 to September 15

\*\* Includes Baird Grove Unit

## Multi-use Recreational Areas

### Chinkapin Bluffs Recreation Area - 398 acres

**Location:** One mile southeast of Columbus Junction, Iowa

**Date Acquired:** Original 262 acres acquired April 16, 1992; 136-acre addition acquired September 12, 2002; Hoover Nature Trail acquired December 2005

**Current management:** Multi-use recreation area

**Existing facilities:** Shelter, several picnic tables, grills, water, composting toilet and trails. The Hoover Nature Trail runs adjacent to the property providing additional biking, hiking and other trail opportunities.

**Improvements this fiscal year:** A wetland restoration project was completed. Repairs to the flood damaged trail were made.

**Planned Improvements:** Landscaping around the restroom will be completed along with finishing trails, and a sidewalk addition. Changes to the Hoover Nature Trail may be made to prevent overflow on the trail and flooding at the fairgrounds. Location for a primitive campground will be investigated.

**Documented use:** There were 16 shelter reservations for the year (up from 11 in FY 08) with more than 500 visitors recorded as well as 204 participants at ten LCCB programs.

### Flaming Prairie Park - 72 acres

**Location:** Approximately 15 miles south of Muscatine, Iowa

**Date Acquired:** Sept. 26, 1978

**Current management:** For wildlife habitat, camping and other recreational use. Hunting is prohibited.

**Existing facilities:** Three shelters, camping & picnicking facilities, two latrines, and playground equipment.

**Improvements this fiscal year:** None though repairs were needed due to damage from the June 2008 flood.

**Planned Improvements:** Improvements to the campgrounds and other facilities planned for 2008 were delayed due to high water and scheduled for completion in Fall of 2009.

**Documented use for this area:** Although complete attendance figures are not available, 342 camper use days were recorded, a significant decrease from FY 07 but about the same as FY08. The park was closed from about March to July, 2009 due to high waters. There were two LCCB sponsored programs at the park.

### Snively Access Campground - 6 acres

**Location:** On the west bank of Odessa, approximately four miles east of Wapello, Iowa

**Date Acquired:** The original 25-year management lease was signed with the State of Iowa on May 5, 1985. The lease was updated and extended for another 25 years in June, 2007.

**Current management:** For camping and picnicking

**Existing facilities:** 30 gravel campsites with electric, table & grill, access road, latrine, water

**Improvements this fiscal year:** None though repairs were needed due to damage from the June 2008 flood.

**Planned Improvements:** Water service may be added to the north end.

**Documented use:** Although complete attendance figures are not available, 2,490 camper use days were recorded more than double the number of camper use in FY 08.

### Virginia Grove Recreation Area - 106 acres

**Location:** Approximately 10 miles southwest of Wapello, Iowa

**Date Acquired:** January 7, 1975 (main tract only)

**Current management:** For multi-use recreation, including hunting, fishing, camping, picnicking, hiking and similar uses

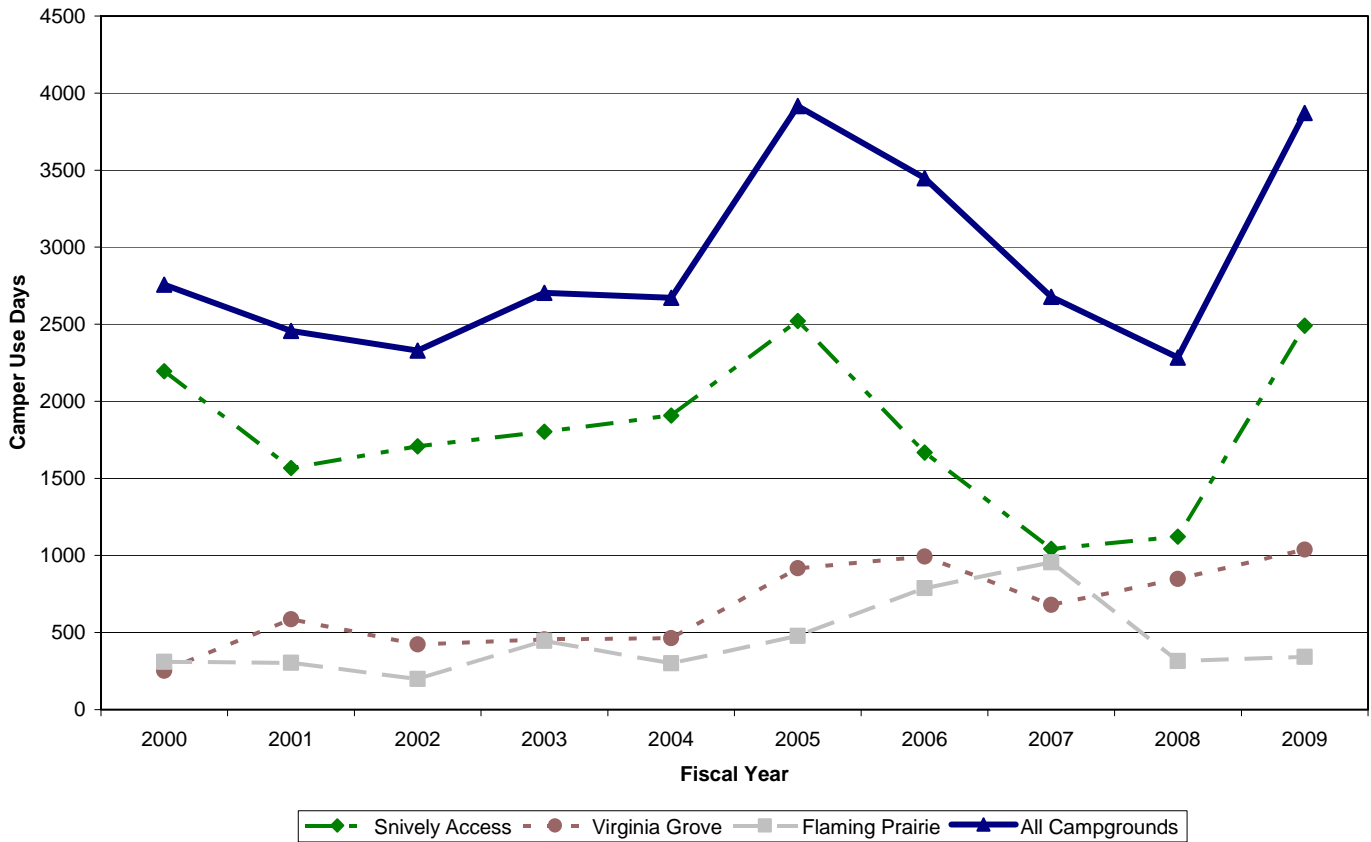
**Existing facilities:** Two shelters, 11 camp sites (all with access to electricity), latrine, playground equipment, pressurized water well, electrical service, handicapped accessible fishing dock and country schoolhouse. A five-acre pond is also located on the area.

**Improvements this fiscal year:** No major improvements.

**Planned Improvements:** Capitol improvement plan will be developed.

**Documented use:** Complete attendance figures are not available; however, an all-time high 1038 camper-use days were recorded, up 24% from FY08. Other documented use for this area includes four shelter reservations with 175 recorded visitors as well as 495 participants at ten LCCB sponsored programs.

**Camper Use Days at LCCB Campgrounds, FY 00 to FY 09**



## Wildlife Areas

### Baird Timber - 18 acres

**Location:** Five miles south of Wapello, Iowa

**Date Acquired:** July 6, 1983

**Current management:** For wildlife purposes and timber improvement management

**Existing facilities:** Small parking lot

**Improvements this fiscal year:** None

**Planned Improvements:** None

### Cairo Woods Wildlife Area - 525 acres

**Location:** Five miles southeast of Columbus Junction, Iowa

**Date Acquired:** Various dates ranging from March 16, 1985 - June 1, 1987

**Current management:** For wildlife habitat purposes and compatible recreational uses such as hunting, hiking and berry picking. Some trails are open to equestrian use from May 21 to September 15 each year.

**Existing facilities:** Three rocked parking lots and trails, including trails marked for equestrian use

**Improvements this fiscal year:** About 6 acres of native grass mix was planted.

**Planned Improvements:** Removal of interior fencing is planned. Updating of timber stand improvement plan and habitat management plans are needed.

### Indian Slough Wildlife Area - 1,049 acres

**Location:** Three miles northwest of Wapello, Iowa

**Date Acquired:** From Nov. 25, 1985 to May 11, 1988

**Current management:** For wildlife habitat purposes and compatible recreational uses such as hunting, fishing, trapping, and hiking.

**Existing facilities:** Water control structures, access roads, four parking lots and mowed trails

**Improvements this fiscal year:** none; repairs were made to damages from the June 2008 flood.

**Planned Improvements:** Efforts will be directed towards wildlife habitat restoration and improvement. Water control structures will continue to be modified to assist in managing water levels.

## River Accesses

### Cappy Russell Access - 5 acres

**Location:** On the Iowa River approximately one-half mile west of Oakville, Iowa

**Date Acquired:** Aug. 1, 1973

**Current management:** Maintained as a boat access

**Existing facilities:** Concrete boat ramp, graveled parking lot

**Improvements this fiscal year:** Repaired damages from June 2008 flood

**Planned Improvements:** None

### Highway 61 Fishing Access - 1 acre

**Location:** Approximately two miles north of Wapello, Iowa on US Highway 61

**Date Acquired:** October 5, 1989

**Current management:** Maintained as an access to the Iowa River for fishing. No boat ramp is provided, but light boats can be carried from the parking lot.

**Existing facilities:** Parking lot and access road

**Improvements this fiscal year:** Repaired damages from June 2008 flood

**Planned Improvements:** None

### River Forks Access - 5 acres

**Location:** The junction of the Iowa and Cedar Rivers, one mile east of Columbus Junction, Iowa

**Date Acquired:** Aug. 1, 1973

**Current management:** Maintained as a boat access, with primitive camping allowed as well as picnicking and fishing.

**Existing facilities:** Concrete boat ramp, parking lot, access road, grill

**Improvements this fiscal year:** The boat ramp was replaced and parking lot regraded. Repaired damages from June 2008 flood

**Planned Improvements:** none planned

### Wykert's Landing – less than 1acre

**Location:** On the Mississippi east of Oakville, Iowa

**Date Acquired:** A ten-year Recreation Lease with the Army Corps of Engineers began March 2, 2002

**Current management:** Maintained as a boat access

**Existing facilities:** Gravel boat ramp, parking lot and access road

**Improvements this fiscal year:** Repaired damages from June 2008 flood

**Planned Improvements:** None

## Other Areas

### Hoover Nature Trail

**Location:** Property located from north of Columbus Junction to South of Morning Sun; Developed sections at Chinkapin Bluffs and east side of Morning Sun.

**Date Acquired:** December 2005

**Current management:** Hiking and biking trails; some areas undeveloped

**Existing facilities:** one parking area at Chinkapin Bluffs

**Improvements this fiscal year:** None

**Planned Improvements:** Signage improvements. May seek development of additional sections at some time. May look at acquiring connecting pieces.

### Maintenance Shed - 1 acre

**Location:** Just outside the west city limits of Wapello, Iowa

**Date Acquired:** May 4, 1977

**Current management:** For storage of equipment, materials and as a work site for the field crew

**Existing facilities:** An equipment storage and work shed, a small storage shed, and an outside nursery cooler

**Improvements this fiscal year:** None

**Planned Improvements:** Additional shed is needed.

### Toolesboro Indian Mounds and Museum - 6 acres

**Location:** Approximately 10 miles southeast of Wapello, Iowa

**Date Acquired:** Annual agreements with State Historical Society of Iowa started on May 19, 1990

**Current management:** As a national historic site for the preservation and exhibition of the unique cultural history found there

**Existing facilities:** Two well-preserved burial mounds, a visitor center and a small, restored prairie site

**Improvements this fiscal year:** None.

**Planned Improvements:** Work on the prairie renovation will continue. Plan to continue offering at least one public program per year. Will work with the SHSI to improve marketing of the area.

**Documented Use:** Flooding affected visitor numbers in FY 09 with the roads leading to the museum closed for several weeks. Over 841 visitors from 28 states and eight foreign countries visited the site in FY 09, down slightly from last year (which was also affected by flooding). Visitors included 269 from school groups and 86 from other tour groups. In addition, all Louisa County 5<sup>th</sup> graders visited Toolesboro as part of a Louisa County History Field Trip.

## Langwood Education Center - 92 acres

**Location:** Three miles east of Grandview, Iowa

**Date Acquired:** June 1, 2000

**Existing facilities:** Enclosed lodge with wood-burning stove and air conditioning, unheated two-story A-frame dormitory, bathhouse with showers and restrooms, teams course, high ropes challenge course, septic system, boathouse, canoes, fishing dock, bird viewing blind.

**Current management:** For environmental education, outdoor recreation, and challenge programming. Youth group use is encouraged, particularly in conjunction with outdoor education programming, either through the conservation board or other appropriate agency.

**Improvements this fiscal year:** Installed electric hookups for campers and other outdoor uses.

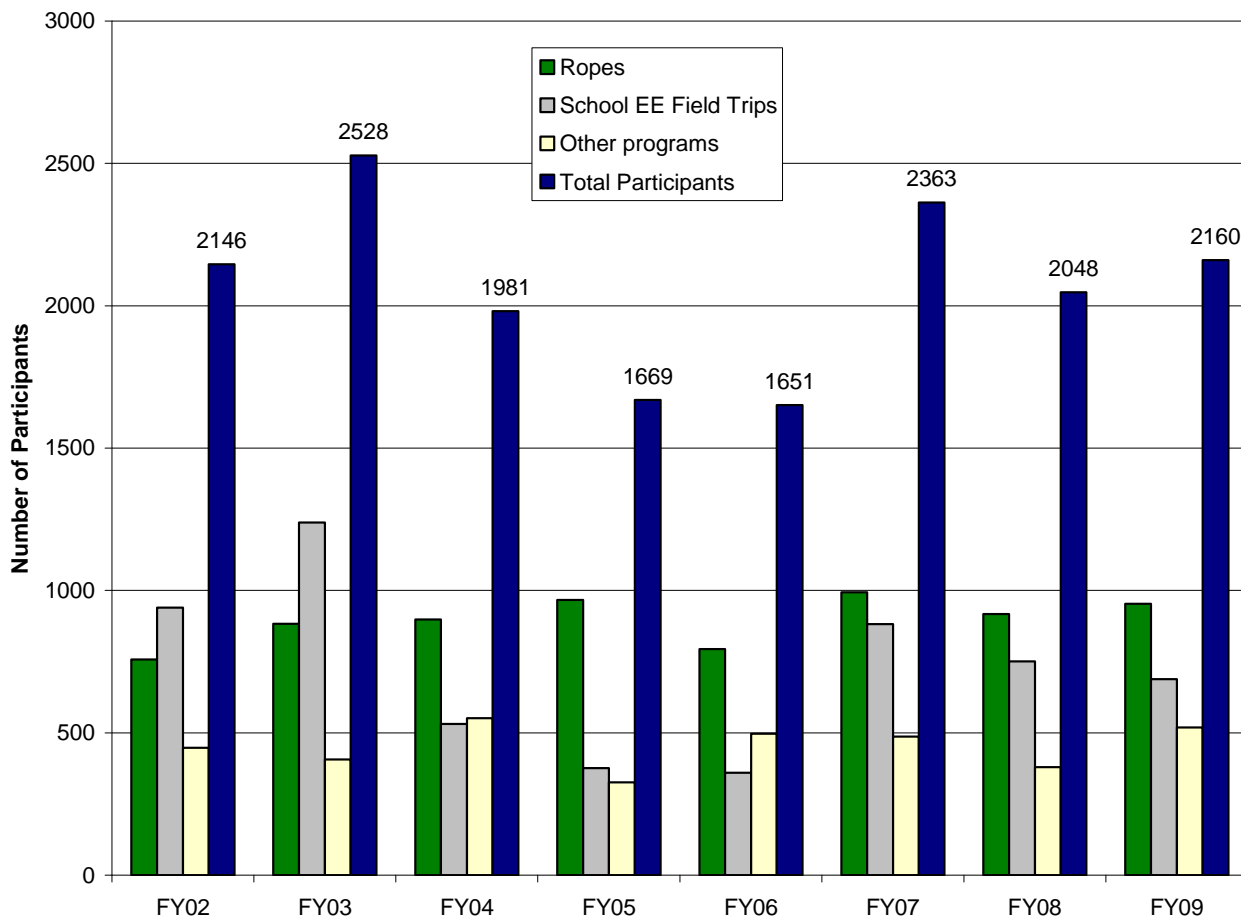
**Planned Improvements:** Preliminary engineering for the Louisa Interpretive Center will begin.

**Documented use:** The number of participants using Langwood for events (facility use) reached an all time high at 1896 (25% increase over FY08). The number of people attending programs at Langwood increased slightly to 2160 (5% increase from FY 08).

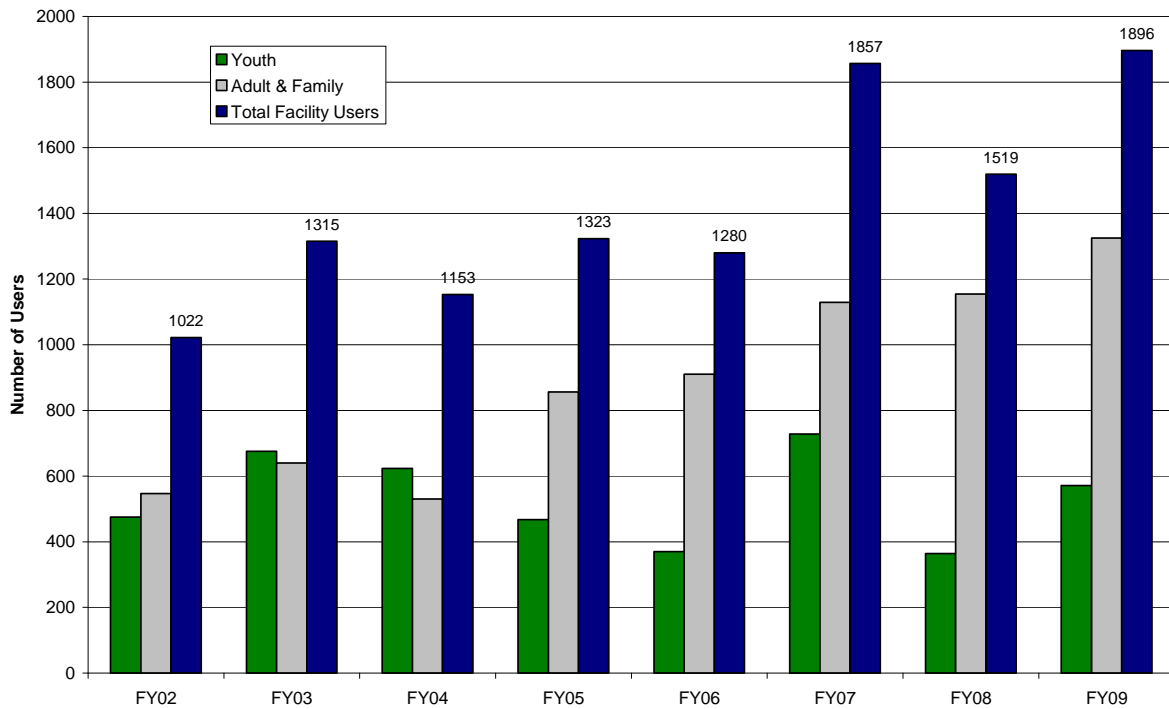
The number of participants using the challenge course remained stable at just over 950 participants. Graphs on the following page show Langwood use over the past eight years.

Revenue for facility use, ropes course, public programs and field trips were slightly lower than FY08 which was a record year. Langwood visitors continue to come mainly from outside Louisa County – with 58% of facility groups and 81% of challenge course users coming from out of county.

Langwood Program Participants, FY02 - FY09



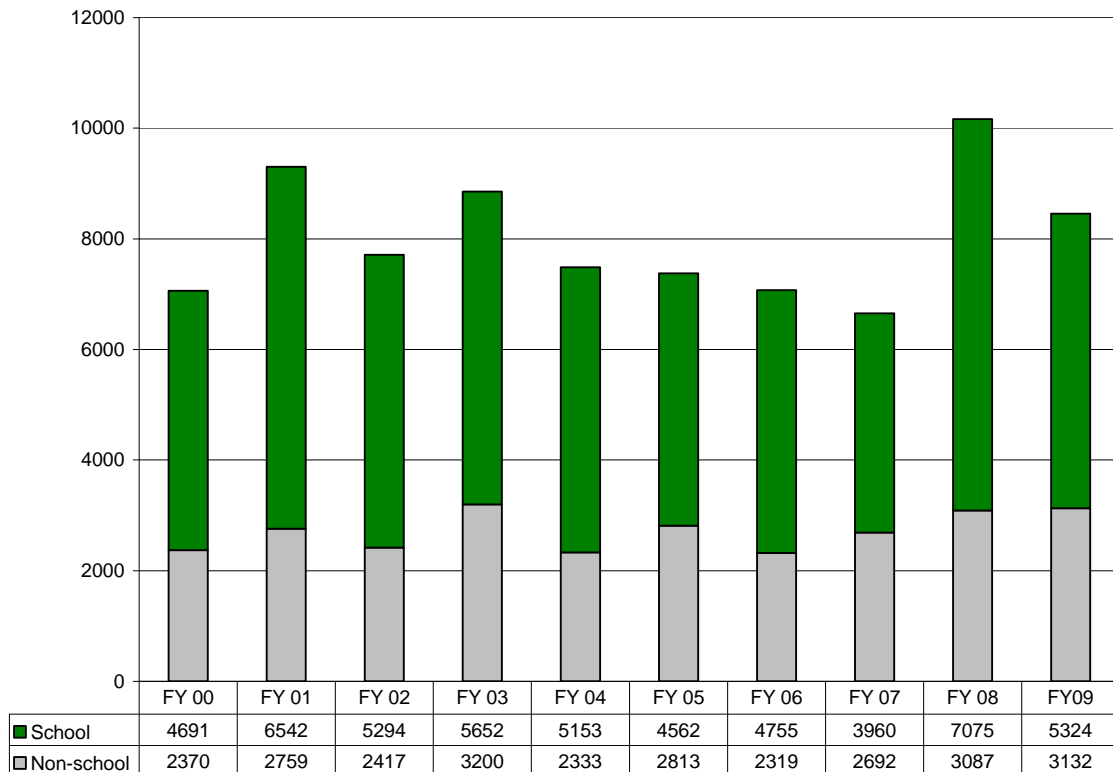
### Langwood Facility Users, FY02 - FY09



## Environmental Education and Public Relations

The conservation board conducted 387 environmental education programs in FY 09, with a total attendance of 8,456 which represents a decrease in participants over FY 08.

### Participants in Environmental Ed Programs, FY 00 to FY 09



### Publicity & Marketing

- The staff helped write and distribute three issues of the “Naturally Louisa County Newsletter.” The newsletter is a cooperative effort between Tri-Rivers Conservation Foundation and the LCCB. It also includes information from the Iowa Department of Natural Resources, Louisa County Soil and Water Conservation District, Port Louisa National Wildlife Refuge and local non-governmental conservation organizations. The newsletter was both offered online and via email. Just over 1400 subscribers receive the newsletter in the mail while another 200+ receive it via email. The newsletter is also available on the website.
- A website was maintained for both LCCB and the Naturally Louisa County campaign. LCCB also became part of the MyCountyParks.com website.
- News releases for events were distributed to local media as well as post-publicity photos and articles.
- In addition, several LCCB events and programs were covered as news stories by the local media.
- LCCB continued to be a part of the Naturally Louisa County marketing campaign

### Youth Programming

- The LCCB added two conservation clubs to the summer nature camp program in the summer of 2008. Children in grades 6-12 were able to participate in one or both clubs and take part in a variety of activities including paddling, caving, hiking and camping. The Outdoor Adventure Club was continued in 2009 with grant funding from Monsanto.
- A grant from the Iowa Math and Science Education program provided additional summer programming for youth in the summer of 2009.
- The LCCB continued to provide a Summer Rec program for the city of Morning Sun.
- The LCCB continued to provide soil and water programs to county schools for the Louisa County Conservation District.
- The LCCB continued to provide organization of two hunter safety courses with funding for meals provided by MidAmerican Energy; Monsanto Off the Job Safety Committee and American Legion, Post 100.

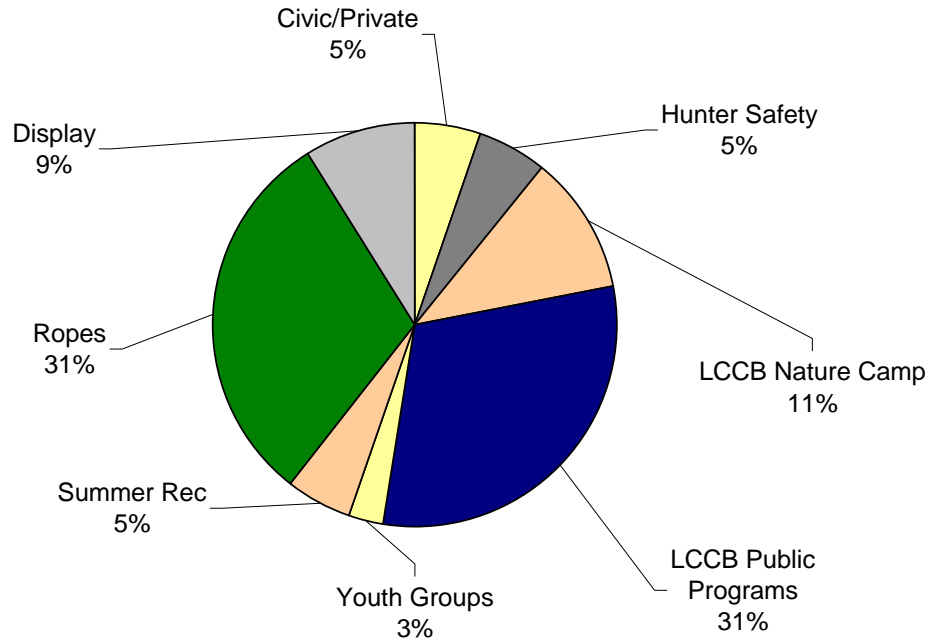
### School Programming

- The total number of students and teachers at LCCB environmental education programs was 5324, down from FY08 when an afterschool program increase numbers reached.

### Other Programs

- The number of participants in non-school programs increased slightly to 3,132.
- Had a display at the Louisa County Fair in partnership with the Louisa County Soil & Water Conservation District. Held public programs including several paddling trips, a youth pheasant hunt, Halloween Hike, Fish n Fun Day, Ice fishing, Full Moon Hike, wild edibles hikes, Easter Antler Hunt and an Earth Day River Cleanup.
- The Louisa Solid Waste Commission contracted with the LCCB to provide solid waste education to Louisa County residents.

FY 09 Non-School Programs - Number of Participants (3,132 total)



## Cooperative Programs and Agreements

- A. **Iowa Department of Natural Resources** - An agreement was continued for management and development of Snively Access. A fisheries management agreement was continued for the Virginia Grove and Langwood ponds.
- B. **Army Corps of Engineers** - The recreational leases at Flaming Prairie Park and Wykert's Landing were continued.
- C. **Louisa County Historical Society** – The LCCB continued an agreement to provide a museum manager for the Louisa County Heritage Center.
- D. **City of Morning Sun** - The LCCB continued to provide a summer recreation program in Morning Sun.
- E. **State Historical Society of Iowa** – The museum management and interpretation agreement (annual) for the Toolesboro Historic Site was continued.
- F. **Louisa County Soil & Water Conservation District** - Continued an environmental education services agreement for presenting soil and water conservation programs in area schools.
- G. **Louisa County Solid Waste Commission** – The LCCB continued providing solid waste education through a contract with the LCSWC.
- H. **Tri-Rivers Conservation Foundation** - Continued an informal agreement to cooperate on fundraising efforts and support of the LCCB mission.
- I. **Eastern Iowa Conservation Alliance AmeriCorps Program** – Continued to participate in a cooperative program with 10 other eastern Iowa conservation boards to administer an AmeriCorps program.
- J. **Naturally Louisa County** – continued with this effort to market Louisa County's natural resources to state, local and regional visitors. Partners include Iowa Department of Natural Resources, Port Louisa National Wildlife Refuge and Louisa Development Group.

## Projects Planned For FY 2010

- A. Development on existing county areas may include:
  - 1. An extreme makeover event at Flaming Prairie Park
  - 2. Improvement of areas currently in native grass plantings.
  - 3. Development of habitat management plan for wildlife areas.
- B. Other plans for FY 09 include:
  - 1. Continuation of a monthly conservation club for teens
  - 2. Move forward with plans for the Louisa Interpretive Center at Langwood
  - 3. Partner with other organizations to develop Iowa River Water Trail
  - 4. Pursue acquisition of a boat landing on the Iowa River in the Gladwin Area

### Attachments

Financial Report

**Approved by the Louisa County Conservation Board at the meeting on October 13, 2009**

**Financial Report--General Basic Fund**

<b>General Basic Revenue</b>	
<b>FEMA - Flood 08</b>	<b>\$ 36,186</b>
<b>Donations</b>	<b>\$ 2,125</b>
Misc donations	\$ 625
CFLC - LW Electric	\$ 1,500
<b>Misc. State Grants</b>	<b>\$ 42,932</b>
Marine Fuel Tax (River Forks)	\$ 20,557
DECAT grant	\$ 22,375
<b>ToolesboroContract</b>	<b>\$ 8,900</b>
<b>Misc Federal grants</b>	<b>\$ 28,746</b>
Wetland enhancement	\$ 6,375
AmeriCorps reimbursement	\$ 12,923
USDA payment	\$ 9,448
<b>Camping Fees</b>	<b>\$ 11,484</b>
Camping Coupons	\$ 2,050
Flaming Prairie	\$ 799
Snively	\$ 5,308
Virginia Grove	\$ 3,327
<b>Shelter Fees</b>	<b>\$ 475</b>
<b>Land Rent</b>	<b>\$ 17,194</b>
Kinder Morgan, Inc.	\$ 89
Crop ground rent	\$ 16,709
CRP payment (one time)	\$ 396
<b>Equipment Rent</b>	<b>\$ 140</b>
<b>LCHS Agreement</b>	<b>\$ 9,055</b>
<b>Miscellaneous</b>	<b>\$ 2,300</b>
<b>Sales of land, blgs, equip, etc.</b>	<b>\$ 16</b>
<b>Langwood</b>	<b>\$ 14,576</b>
Rental Fees	\$ 4,758
Ropes Course	\$ 9,354
Field trip fees	\$ 464
<b>Environmental Education</b>	<b>\$ 11,870</b>
SWCD Program	\$ 1,200
Summer Rec Morning Sun	\$ 1,398
Hunter Safety	\$ 370
Halloween Hike	\$ 494
Day Camp Fees	\$ 2,945
Toolesboro Donations	\$ 291
Other Public Programs	\$ 806
Nestbox sales	\$ 108
Louisa Regional Solid Waste	\$ 1,711
Other grants & misc	\$ 2,548
<b>Total Revenue</b>	<b>\$ 186,000</b>

**General Basic Expenditures**

**Salaries**

Executive Director	\$	44,685
Langwood Program Director	\$	31,279
Naturalist	\$	26,275
Operations Supervisor	\$	33,781
Ranger/Technician	\$	23,235
LCHS muesum manager	\$	6,098
Seasonal Maintenance	\$	8,118
Americorps Park Staff	\$	11,978
Americorps EE	\$	8,250
Office Manager	\$	20,754
Toolesboro Staff	\$	2,319
Ropes facilitators	\$	1,191
Summer Program Aide	\$	438

**FICA** \$ 17,209

**IPERS** \$ 12,998

**Health Insur** \$ 8,775

**Americorps Health** \$ 1,402

**Administration**

Life Insur	\$	82
Office Supplies	\$	6,447
Environmental Ed	\$	7,356
Decatagorization grant	\$	11,245
Official Publications	\$	250
Legal Services	\$	4,475
Mileage	\$	446
Telephone	\$	3,676
School of Instruction	\$	2,650
Rental-Buildings		
Dues/Memberships	\$	925
Licenses, Testing, Permits	\$	80
Property Taxes	\$	746

**Operations & Maintenance**

Fuel	\$	13,344
Excise Tax	\$	646
Minor Equip/Hand Tools	\$	650
Uniforms	\$	915
Americorps Uniforms & Safety	\$	294
School of Instruct--Americorps	\$	199
Electricity	\$	6,345
Motor Vehicle Equip / Repair	\$	3,812
Operating Equip Repair	\$	1,601
Equipment Insurance	\$	8,620
Workman's Comp	\$	4,875
Park Service	\$	47,022
Park Service Toolesboro Mounds	\$	97
Park Service Langwood	\$	5,237
Wildlife Habitat	\$	307

**Total General Basic Expenditures** \$ **391,126**

**Financial Report  
Land Acquisition (Conservation Reserve)**

<b>Balance 7/1/08</b>	<b>\$ 43,754</b>
<b>Revenue</b>	
Transfer from General Basic	\$ 70,000
<b>Expenditures</b>	
Chinkapin Wetland Enhancement	\$ 2,280
Equipment	\$ 41,847
<b>Balance in Conservation Reserve 6/30/09</b>	<b>\$ 69,627</b>

**Financial Report –  
Resource Enhancement and Protection (REAP)**

Balance 7/1/08	\$ 32,242
<b>Revenue</b>	
State Payment	\$ 15,795
Interest	\$ 522
<b>Expenditures</b>	
Improvements	\$ 2,689
Balance 6/30/09	\$ 45,871