

LOUISA COUNTY CONSERVATION BOARD

ANNUAL REPORT

July 1, 2007 to June 30, 2008

TO: The Louisa County Board of Supervisors

Following is the annual report of the Louisa County Conservation Board for the fiscal year (July 1, 2007 - June 30, 2008) as prescribed in Chapter 350.3 of the Code of Iowa (1993).

Highlight of FY 08 Accomplishments

- Major flood event in June 2008 affecting most LCCB areas & programs
- Wetland enhancement work at Chinkapin Bluffs
- Increased use at Chinkapin Bluffs shelter
- Day use area added at Snively Campground
- Odessa Water Trail launched
- EE programming participants topped 10,000
- Outdoor Adventure Club program initiated

Board Roster

The Louisa County Conservation Board members who served during this reporting period were:

Name	Title	Expiration Date	Meetings Attended
Kathy Vance	Member	Dec. 31, 2007	4
Doug Brown	Member	Dec. 31, 2008	13
Dave Schweitzer	Member	Dec. 31, 2009	9
Jay Schweitzer	Chair	Dec 31, 2010	11
Brad Moss	Secretary/Treasurer	Dec 31, 2011	12
Roger Edwards	Vice-chair	Dec 31, 2012 (began 1/1/08)	3

Meetings Held

The board held 12 regular meetings and one special meeting during the year. The minutes of the meetings are on file at the Louisa County Conservation Board Office, 12635 County Road G56, Wapello, Iowa, 52653.

Louisa County Conservation Board Staff

The Louisa County Conservation Board maintained six permanent staff positions and five seasonal positions. Three "on-call" staff positions help with staffing for ropes facilitation and substitute Toolesboro interpretation. Funding from the Quad County Decategorization Board allowed hiring an additional employee for afterschool programming.

The LCCB continued to participate in the Eastern Iowa Conservation Alliance AmeriCorps project. Under the project, the LCCB sponsored four 6-month fulltime and one summer-only AmeriCorps members during 2007. A grant from the Corporation for National Service provided cost share for the program.

In addition, the conservation board used the services of volunteers and community service workers.

LCCB Permanent Employees for FY 08

Name	Title	Anniversary Date
Julie Ohde	Executive Director	06/1985 (PFT)
Katie Hammond	Naturalist/Langwood Director	03/2000 (PFT)
Kathy Dice	Naturalist	01/2001 (PFT – 80 %)
Mary Gish	Office/Museum Manager	02/2001 (PPT – 70%)
Jeff Snyder	Operations Supervisor	10/2006 (PFT)
Kenny Moore	Park Ranger/Technician	10/2006 (PFT – 80%)

LCCB Seasonal, Temporary & On Call Employees for FY 08

Name	Title	Dates Worked
Ernest Gerst	Seasonal maintenance	4/08-06/08(SFT)
Emily Wright	Afterschool Program Coordinator	02/08 – 06/08 (SFT)
Rachel Kelley	Toolesboro Assistant	7/07 – 06/08 (SPT)
Bev Lorack	Toolesboro Assistant	7/07 – 10/07 (SPT)
Katie Walker	Toolesboro Assistant	5/08 – 06/08 (SPT)
Bev McCulley	Toolesboro Assistant (Substitute)	7/07 – 6/08 (On-call)
Cindy Klebe	Ropes Facilitator/EE assistant	7/07 – 6/08 (On-call)
Tessa Pugh	Ropes Facilitator/EE assistant	7/07 – 6/08 (On-call)

LCCB AmeriCorps Members for FY 08

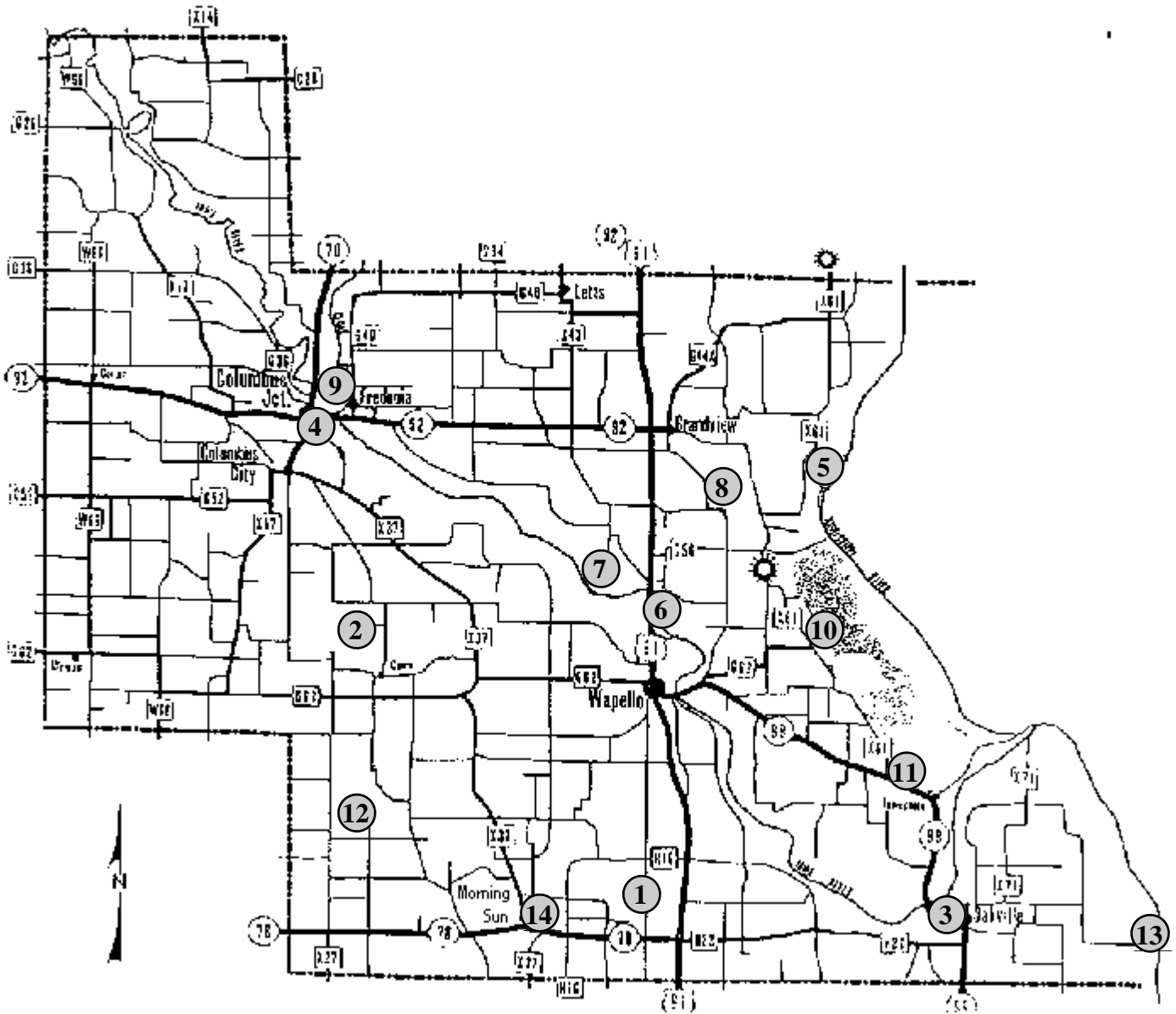
Name	Service	Dates Enrolled
Ernest Gerst	AmeriCorps Natural Resources	07/07-08/07
Tanner Grimm	AmeriCorps Natural Resources	07/07-08/07
Elizabeth Yoder	AmeriCorps Environmental Ed	07/07-05/08
Mitch Schwietzer	AmeriCorps Natural Resources (Summer only)	07/07-08/07
Ernie Peters	AmeriCorps Natural Resources	03/08 – 06/08
John Griffin	AmeriCorps Natural Resources	04/08 – 06/08

Definitions

- PFT: Permanent Full Time (at least 32 hours/week, receives full benefits)
- PPT: Permanent Part Time (20-31 hours/week, salaried, receives vacation, sick leave & holidays)
- SFT: Seasonal Full Time (works full time seasonally, no benefits)
- SPT: Seasonal Part Time (works part time, seasonally, no benefits)
- On-Call: works only when needed

Area Inventory

The Louisa County Conservation Board owns and/or manages a total of 14 areas, totaling approximately 2290 acres for outdoor recreation and wildlife benefits. A map and brief description of these areas follows.



Louisa County Conservation Board Areas

Map number	Area 911 Address	Acreage	# Camping sites	Electricity	Water	Toilets	Picnicking	Hiking Trails	Equestrian Trails	Fishing, R-River L=lake or pond	Boating - motor	Boating - electric or no motor	Boat Ramp	Hunting - Forest	Hunting - Upland	Hunting - Wetland
1	Baird Timber 2851 "K" Ave	18												●		
2	Cairo Woods Wildlife Area 9032 "S" Ave (Main Access)	525						●	*	L		●		●	●	
3	Cappy Russell Access 6444 West Cty Rd X-71	5					●			R	●	●	●			
4	Chinkapin Bluffs Recreation Area 14198 "R" Ave	398			●		●	●						●	●	
5	Flaming Prairie Park 14624 Cty Rd X-61	71	20	●	●	●	●			L	●	●	●			
6	Highway 61 Access 10726 Highway 61	1								R	●					
7	Indian Slough Wildlife Area 1225 "L" Avenue (Main Access)	1100							*	R, L		●		●	●	●
8	Langwood Education Center 14001 "H" Ave	90	For group use by reservation only													
9	River Forks Access 1001 Main St, Fredonia	5					●			R	●	●	●			
10	Snively Access 9426 Cty Rd X-61	6	34	●	●	●	●			L	●					
11	Toolesboro Indian Mounds & Museum 6568 Toolesboro Rd	5			●	●	●									
12	Virginia Grove Recreation Area** 20406 55th St	106	11	●	●	●	●	●		L		●		●	●	
13	Wykert's Landing 1714 20th St	0.5								R	●	●	●			
14	Hoover Nature Trail Hwy 78, Morning Sun							●								

* Open May 21 to September 15

** Includes Baird Grove Unit

Multi-use Recreational Areas

Chinkapin Bluffs Recreation Area - 398 acres

Location: One mile southeast of Columbus Junction, Iowa

Date Acquired: Original 262 acres acquired April 16, 1992; 136-acre addition acquired September 12, 2002; Hoover Nature Trail acquired December 2005

Current management: Multi-use recreation area

Existing facilities: Shelter, several picnic tables, grills, water, composting toilet and trails. The Hoover Nature Trail runs adjacent to the property providing additional biking, hiking and other trail opportunities. A 136-acre wetland was added to the property in FY 03.

Improvements this fiscal year: A wetland restoration project was begun but high water prevented planting of prairie seed. Work continued on the restroom though it was not completed.

Planned Improvements: The wetland seeding will be completed. Landscaping around the restroom will be completed along with finishing trails, and a sidewalk addition. Changes to the Hoover Nature Trail may be made to prevent overflow on the trail and flooding at the fairgrounds. Location for a primitive campground will be investigated.

Documented use: There were 11 shelter reservations for the year (up from 6 in FY 07) with more than 150 visitors recorded as well as six LCCB programs.

Flaming Prairie Park - 72 acres

Location: Approximately 15 miles south of Muscatine, Iowa

Date Acquired: Sept. 26, 1978

Current management: For wildlife habitat, camping and other recreational use. Hunting is prohibited.

Existing facilities: Three shelters, camping & picnicking facilities, two latrines, and playground equipment.

Improvements this fiscal year: No major improvements were made.

Planned Improvements: Improvements to the campgrounds and other facilities planned for 2008 were delayed due to high water and scheduled for completion in 2009..

Documented use for this area: Although complete attendance figures are not available, 315 camper use days were recorded, a significant decrease from FY 07. The park was closed from about March 1 to August 14, 2008 due to high waters. There were two shelter reservations and one LCCB sponsored program at the park.

Snively Access Campground - 6 acres

Location: On the west bank of Odessa, approximately four miles east of Wapello, Iowa

Date Acquired: The original 25-year management lease was signed with the State of Iowa on May 5, 1985. The lease was updated and extended for another 25 years in June, 2007.

Current management: For camping and picnicking

Existing facilities: 30 gravel campsites with electric, table & grill, access road, latrine, water

Improvements this fiscal year: A small day use area was developed to prevent conflicts with use of camp sites for picnicking and fishing. The Army Corps of Engineers completed a riprap project to prevent shoreline erosion from exposing pre-historic artifacts. A sand beach was built to cover the riprap and allow boats to get to shore.

Planned Improvements: Water service may be added to the north end.

Documented use: Although complete attendance figures are not available, 1,121 camper use days were recorded which was up from FY 07 despite only two weeks of operation from May to June of 2008.

Virginia Grove Recreation Area - 106 acres

Location: Approximately 10 miles southwest of Wapello, Iowa

Date Acquired: January 7, 1975 (main tract only)

Current management: For multi-use recreation, including hunting, fishing, camping, picnicking, hiking and similar uses

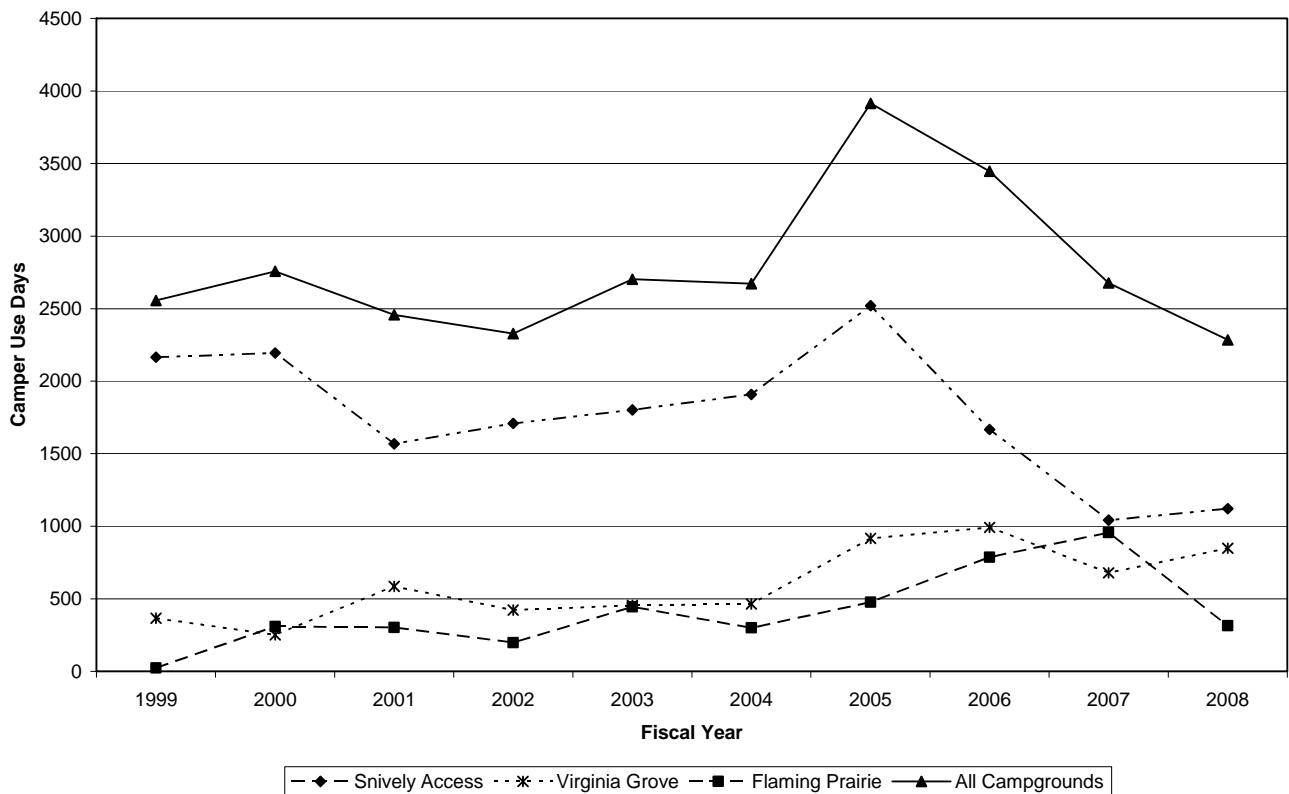
Existing facilities: Two shelters, 11 camp sites (all with access to electricity), latrine, playground equipment, pressurized water well, electrical service, handicapped accessible fishing dock and country schoolhouse. A five-acre pond is also located on the area.

Improvements this fiscal year: No major improvements.

Planned Improvements: Capitol improvement plan will be developed.

Documented use: Complete attendance figures are not available; however, 848 camper-use days were recorded, up 24% from FY07. The increase is probably due to electric improvements as well as high water at the other two campgrounds in spring of 2008. Other documented use for this area includes eight shelter reservations (up from four last year) with 190 recorded visitors as well as 359 participants at nine LCCB sponsored programs.

Camper Use Days at LCCB Campgrounds, FY 99 to FY 08



Wildlife Areas

Baird Timber - 18 acres

Location: Five miles south of Wapello, Iowa

Date Acquired: July 6, 1983

Current management: For wildlife purposes and timber improvement management

Existing facilities: Small parking lot

Improvements this fiscal year: None

Planned Improvements: None

Cairo Woods Wildlife Area - 525 acres

Location: Five miles southeast of Columbus Junction, Iowa

Date Acquired: Various dates ranging from March 16, 1985 - June 1, 1987

Current management: For wildlife habitat purposes and compatible recreational uses such as hunting, hiking and berry picking. Some trails are open to equestrian use from May 21 to September 15 each year.

Existing facilities: Three rocked parking lots and trails, including trails marked for equestrian use

Improvements this fiscal year: About 6 acres of native grass mix was planted.

Planned Improvements: Removal of interior fencing is planned. Updating of timber stand improvement plan and habitat management plans are needed.

Indian Slough Wildlife Area - 1,049 acres

Location: Three miles northwest of Wapello, Iowa

Date Acquired: From Nov. 25, 1985 to May 11, 1988

Current management: For wildlife habitat purposes and compatible recreational uses such as hunting, fishing, trapping, and hiking.

Existing facilities: Water control structures, access roads, four parking lots and mowed trails

Improvements this fiscal year: none

Planned Improvements: Efforts will be directed towards wildlife habitat restoration and improvement. Water control structures will continue to be modified to assist in managing water levels.

River Accesses

Cappy Russell Access - 5 acres

Location: On the Iowa River approximately one-half mile west of Oakville, Iowa

Date Acquired: Aug. 1, 1973

Current management: Maintained as a boat access

Existing facilities: Concrete boat ramp, graveled parking lot

Improvements this fiscal year: None

Planned Improvements: None

Highway 61 Fishing Access - 1 acre

Location: Approximately two miles north of Wapello, Iowa on US Highway 61

Date Acquired: October 5, 1989

Current management: Maintained as an access to the Iowa River for fishing. No boat ramp is provided, but light boats can be carried from the parking lot.

Existing facilities: Parking lot and access road

Improvements this fiscal year: None

Planned Improvements: None

River Forks Access - 5 acres

Location: The junction of the Iowa and Cedar Rivers, one mile east of Columbus Junction, Iowa

Date Acquired: Aug. 1, 1973

Current management: Maintained as a boat access, with primitive camping allowed as well as picnicking and fishing.

Existing facilities: Concrete boat ramp, parking lot, access road, grill

Improvements this fiscal year: None

Planned Improvements: Boat ramp will be replaced and parking lot regraded in FY09.

Wykert's Landing – less than 1acre

Location: On the Mississippi east of Oakville, Iowa

Date Acquired: A ten-year Recreation Lease with the Army Corps of Engineers began March 2, 2002

Current management: Maintained as a boat access

Existing facilities: Gravel boat ramp, parking lot and access road

Improvements this fiscal year: None

Planned Improvements: None

Other Areas

Hoover Nature Trail

Location: Property located from north of Columbus Junction to South of Morning Sun; Developed sections at Chinkapin Bluffs and east side of Morning Sun.

Date Acquired: December 2005

Current management: Hiking and biking trails; some areas undeveloped

Existing facilities: one parking area at Chinkapin Bluffs

Improvements this fiscal year: None

Planned Improvements: Signage improvements. May seek development of additional sections at some time. May look at acquiring connecting pieces.

Maintenance Shed - 1 acre

Location: Just outside the west city limits of Wapello, Iowa

Date Acquired: May 4, 1977

Current management: For storage of equipment, materials and as a work site for the field crew

Existing facilities: An equipment storage and work shed, a small storage shed, and an outside nursery cooler

Improvements this fiscal year: None

Planned Improvements: Additional shed is needed.

Toolesboro Indian Mounds and Museum - 6 acres

Location: Approximately 10 miles southeast of Wapello, Iowa

Date Acquired: Annual agreements with State Historical Society of Iowa started on May 19, 1990

Current management: As a national historic site for the preservation and exhibition of the unique cultural history found there

Existing facilities: Two well-preserved burial mounds, a visitor center and a small, restored prairie site

Improvements this fiscal year: None.

Planned Improvements: Work on the prairie renovation will continue. Plan to continue offering at least one public program per year. Will work with the SHSI to improve marketing of the area.

Documented Use: Flooding affected visitor numbers in FY 08 with the museum closed the last two weeks of June. Over 982 visitors from 26 states and four foreign countries visited the site in FY 08, down slightly from last year. Visitors included 352 from school groups and 57 from other tour groups. Two public programs were presented by the LCCB staff and all Louisa County 5th graders visited Toolesboro as part of a Louisa County History Field Trip.

Langwood Education Center - 92 acres

Location: Three miles east of Grandview, Iowa

Date Acquired: June 1, 2000

Existing facilities: Enclosed lodge with wood-burning stove and air conditioning, unheated two-story A-frame dormitory, bathhouse with showers and restrooms, teams course, high ropes challenge course, septic system, boathouse, canoes, fishing dock, bird viewing blind. In addition, the LCCB manages the adjoining 40-acre property for the Iowa Natural Heritage Foundation, with plans to eventually purchase the area from them. This ground is currently in row crop production.

Current management: For environmental education, outdoor recreation, and challenge programming. Youth group use is encouraged, particularly in conjunction with outdoor education programming, either through the conservation board or other appropriate agency.

Improvements this fiscal year: The “Crumley Property” adjacent to Langwood was purchased by Tri-Rivers Conservation Foundation from the Iowa Natural Heritage Foundation for the purpose of building the Louisa Interpretive Center. The farm lease on the property was also transferred to Tri-Rivers.

Planned Improvements: Look into providing electric hookups for campers. Marketing strategies for increasing Langwood use will be developed and applied.

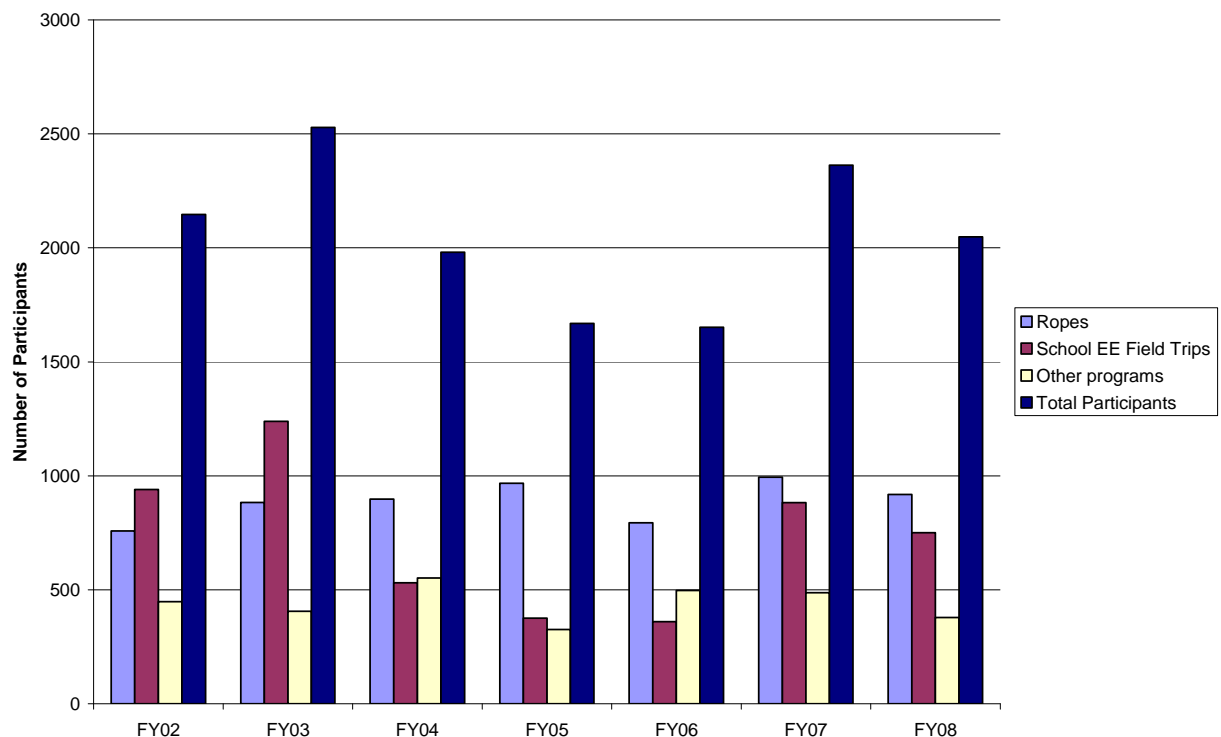
Documented use: The number of participants using Langwood for events (facility use) decreased slightly from FY 07 which saw a large increase. The number of people attending programs at Langwood also showed a slight decrease from FY 07.

The number of participants using the challenge course was stable though income rose nearly 50% due to participation by several corporate groups and a change in the fee schedule. Graphs on the following page show Langwood use over the past seven years.

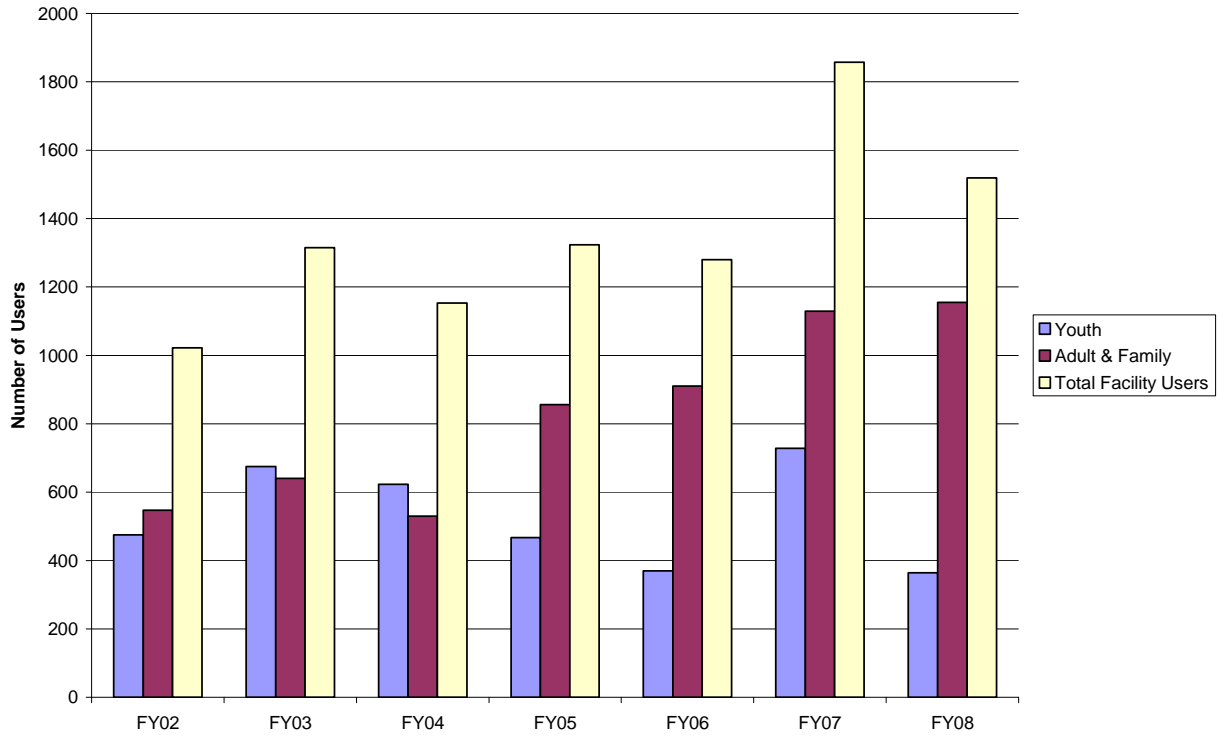
Revenue for facility use, ropes course, public programs and field trips increased by 20% over FY 07.

Langwood visitors continue to come mainly from outside Louisa County – with 63% of facility groups and 93% of challenge course users coming from out of county.

Langwood Program Participants, FY02 - FY08



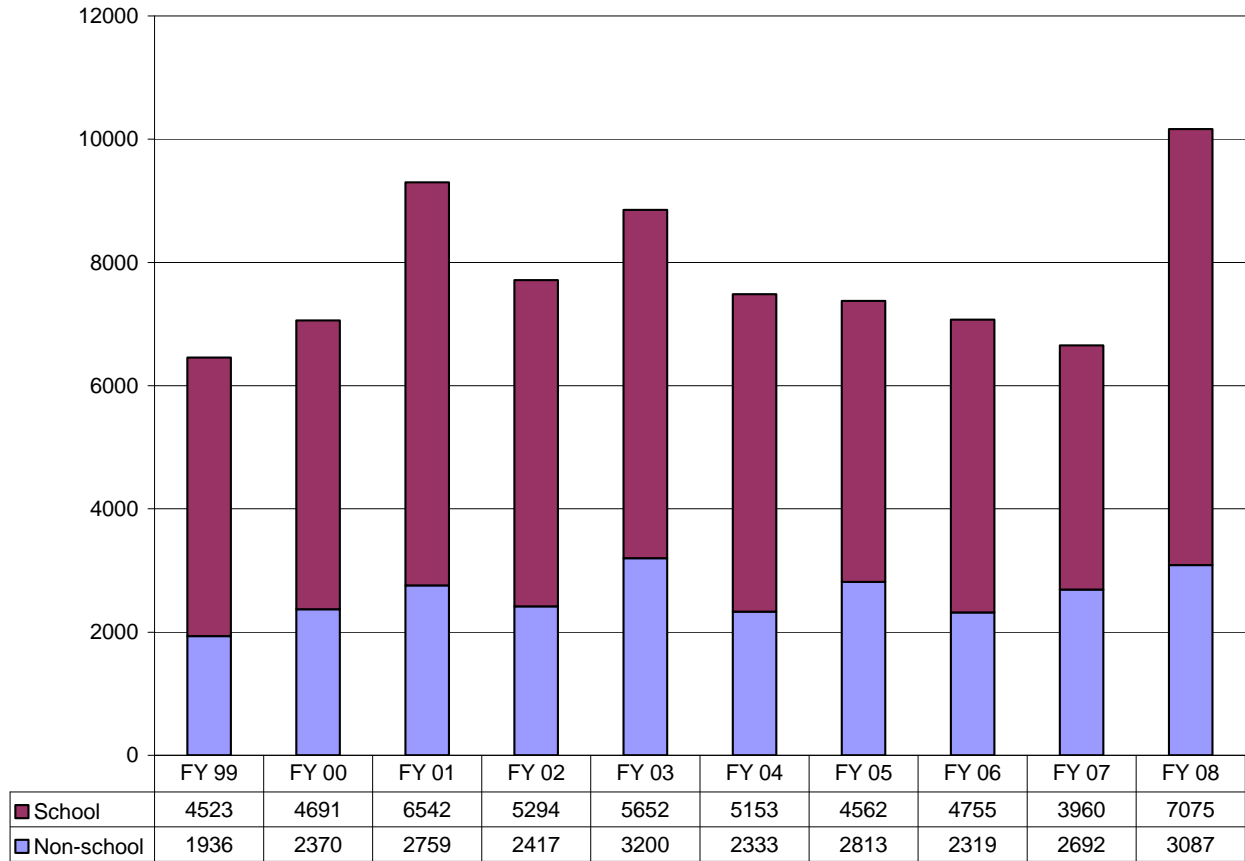
Langwood Facility Users, FY02 - FY08



Environmental Education and Public Relations

The conservation board conducted 395 environmental education programs in FY 08, with a total attendance of 10,162 which represents more than a 50% increase in participants over FY 07.

Participants in Environmental Ed Programs, FY 99 to FY 08



Publicity

- The staff wrote and distributed one issue of the “LCCB Newsletter.” The newsletter incorporated pages for the Iowa Department of Natural Resources, Louisa County Soil and Water Conservation District, Port Louisa National Wildlife Refuge and local non-governmental conservation organizations. The newsletter was both offered online and via email. Just over 1400 subscribers receive the newsletter in the mail while another 100+ receive it via email. The newsletter is also available on the website.
- A website was maintained for both LCCB and the Naturally Louisa County campaign
- Over 50 news releases were distributed to local media as well as post-publicity photos and articles.
- In addition, several LCCB events and programs were covered as news stories by the local media.
- LCCB continued to be a part of the Naturally Louisa County marketing campaign

Youth Programming

- The LCCB added two conservation clubs to the summer nature camp program. Children in grades 6-12 were able to participate in one or both clubs and take part in a variety of activities including paddling, caving, hiking and camping.
- The LCCB continued to provide a Summer Rec program for the city of Morning Sun.
- The LCCB continued to provide soil and water programs to county schools for the Louisa County Conservation District.
- The LCCB continued to provide organization of two hunter safety courses with funding for meals provided by MidAmerican Energy; Monsanto Off the Job Safety Committee and American Legion, Post 100.
- Several nature camps were either cancelled or shortened due to flooding in June.

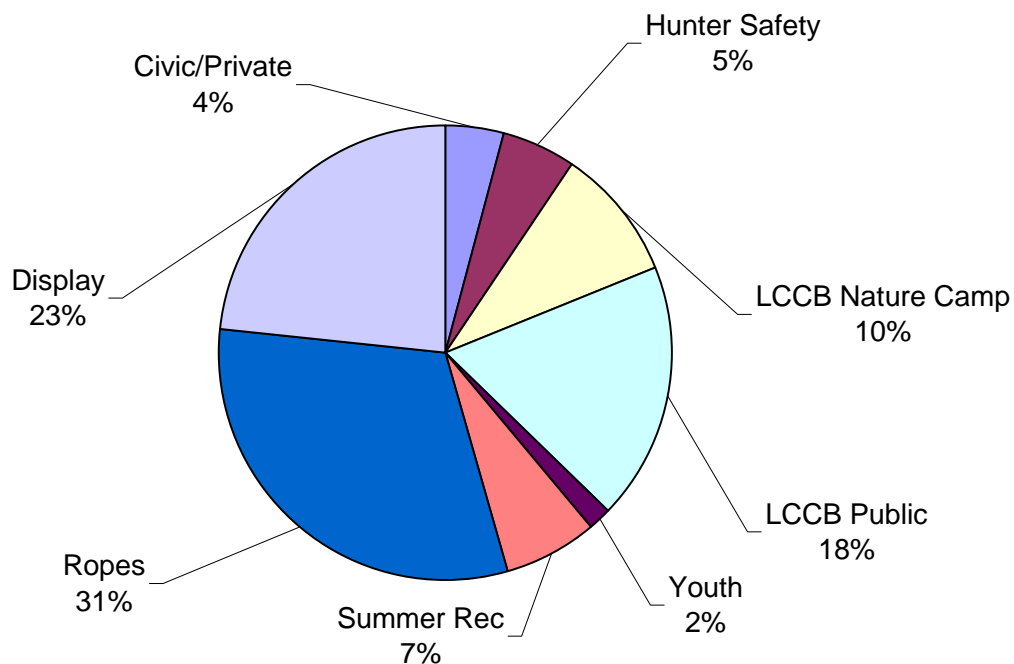
School Programming

- The total number of students and teachers at LCCB environmental education programs was 7075, an increase of more than 78% over FY 07.
- The increase was due to an afterschool school program funded by the Quad County Decategorization Board. Students in grades 1-5 at Roundy Elementary participated in afterschool programming two days per week for three months.

Other Programs

- The number of participants in non-school programs increased by 13% over FY 07.
- Had a display at the Louisa County Fair in partnership with the Louisa County Soil & Water Conservation District. Held public programs including a senior citizen field trip (Ghost Villages of Louisa County), Odessa Water Trail Launch, Family Campout, Maple Syruping and several paddling trips.
- The Louisa Solid Waste Commission contracted with the LCCB to provide solid waste education to Louisa County residents.

FY 08 Non-School Programs - Number of Participants (3,087 total)



Cooperative Programs and Agreements

- A. **Iowa Department of Natural Resources** - An agreement was continued for management and development of Snively Access. A fisheries management agreement was continued for the Virginia Grove and Langwood ponds.
- B. **Army Corps of Engineers** - The recreational leases at Flaming Prairie Park and Wykert's Landing were continued.
- C. **Louisa County Historical Society** – The LCCB entered into an agreement to provide a museum manager for the Louisa County Heritage Center.
- D. **City of Morning Sun** - The LCCB continued to provide a summer recreation program in Morning Sun.
- E. **State Historical Society of Iowa** – The museum management and interpretation agreement (annual) for the Toolesboro Historic Site was continued.
- F. **Louisa County Soil & Water Conservation District** - Continued an environmental education services agreement for presenting soil and water conservation programs in area schools.
- G. **Louisa County Solid Waste Commission** – The LCCB continued providing solid waste education through a contract with the LCSWC.
- H. **Tri-Rivers Conservation Foundation** - Continued an informal agreement to cooperate on fundraising efforts and support of the LCCB mission.
- I. **Eastern Iowa Conservation Alliance AmeriCorps Program** – Continued to participate in a cooperative program with 10 other eastern Iowa conservation boards to administer an AmeriCorps program.
- J. **Iowa Natural Heritage Foundation** – Continued management of the adjoining 40-acre tract next to Langwood Education Center with an agreement to eventually purchase the property from the Heritage Foundation.
- K. **Naturally Louisa County** – continued with this effort to market Louisa County's natural resources to state, local and regional visitors. Partners include Iowa Department of Natural Resources, Port Louisa National Wildlife Refuge and Louisa Development Group.

Projects Planned For FY 2009

- A. Development on existing county areas may include:
 - 1. Replacement of boat ramp at River Forks Access
 - 2. Flood cleanup and repairs
 - 3. Planting of additional acres to native grasses.
 - 4. Improvement of areas currently in native grass plantings.
 - 5. Development of habitat management plan for Indian Slough Wildlife Area.
 - 6. An extreme makeover event at Flaming Prairie Park
 - 7. Primitive campsite at Chinkapin
 - 8. Enhancement and possible expansion of the Hoover Nature Trail

- B. Other plans for FY 09 include:
 - 1. Development of a monthly conservation club for teens
 - 2. Move forward with plans for the Louisa Interpretive Center at Langwood
 - 3. Partner with other organizations to develop Iowa River Water Trail
 - 4. Pursue acquisition of a boat landing on the Iowa Rive in the Gladwin Area

Attachments

Financial Report

Approved by the Louisa County Conservation Board at the meeting on September 9, 2008

Financial Report--General Basic Operations

	Revenue	
FEMA	\$	5,793.13
Misc Federal grants	\$	64,577.63
Chinkapin wetland enhancement	\$	45,251.75
AmeriCorps Grant	\$	19,325.88
ToolesboroContract	\$	10,323.39
Camping Fees	\$	6,408.00
Camping Coupons	\$	720.00
Flaming Prairie	\$	834.00
Snively	\$	2,879.00
Virginia Grove	\$	1,975.00
Shelter Fees	\$	565.00
Langwood	\$	16,478.00
Rental Fees	\$	5,982.50
Ropes Course	\$	10,049.50
Field trip fees	\$	446.00
Environmental Education	\$	32,610.31
SWCD Program	\$	1,200.00
Summer Rec Morning Sun	\$	1,370.91
Hunter Safety	\$	175.00
Halloween Hike	\$	307.00
Day Camp Fees	\$	1,985.00
Toolesboro Donations	\$	279.00
Other Public Programs	\$	674.00
DECAT grant	\$	26,619.40
Land Rent	\$	19,386.65
Kinder Morgan, Inc.	\$	89.10
Langwood Crop rental (flow through)	\$	5,071.30
Crop ground rent	\$	14,226.25
Equipment Rent	\$	280.00
Donations	\$	3,335.00
Chinkapin project	\$	125.00
other	\$	210.00
Community Foundation (FP playground)	\$	2,000.00
Community Foundation (trees)	\$	1,000.00
Miscellaneous	\$	2,900.51
Total Revenue	\$	162,657.62

General Basic Expenditures

Salaries

Executive Director	\$ 43,382.56
Langwood Program Director	\$ 30,367.74
Naturalist	\$ 25,508.86
Operations Supervisor	\$ 32,797.18
Ranger/Technician	\$ 22,558.12
LCHS muesum manager	\$ 440.00
Seasonal Maintenance	\$ 3,092.55
Americorps Park Staff	\$ 14,424.43
Americorps EE	\$ 10,500.00
Office Manager	\$ 19,769.36
Toolesboro Staff	\$ 4,129.31
Ropes facilitators	\$ 1,192.36
FICA	\$ 16,220.44
IPERS	\$ 11,071.40
Health Insur	\$ 9,129.00
Americorps Health	\$ 1,261.54

Administration

Life Insur	\$ 81.60
Office Supplies	\$ 7,217.82
Environmental Ed	\$ 3,441.33
Decatagorization grant	\$ 28,078.42
Official Publications	\$ 100.70
Postage	\$ 1,175.00
Mileage	\$ 415.82
Telephone	\$ 3,191.06
School of Instruction	\$ 2,157.86
Rental-Buildings	\$ -
Dues/Memberships	\$ 840.00
Licenses, Testing, Permits	\$ 55.00
Property Taxes	\$ 808.00

Operations & Maintenance

Fuel	\$ 13,386.82
State Gas Tax	\$ -
Excise Tax	\$ 511.65
Minor Equip/Hand Tools	\$ 1,452.48
Summer Rec	\$ -
Uniforms	\$ 533.39
Americorps Uniforms & Safety	\$ 364.32
School of Instruct--Americorps	\$ 647.31
Electricity	\$ 6,023.37
Motor Veh Equip / Repair	\$ 2,720.58
Building Maint/Repair	\$ -
Operating Equip Repair	\$ 4,289.35
Equipment Insurance	\$ 7,465.00
Workman's Comp	\$ 6,105.02
Park Service (all areas but LW, TB)	\$ 5,629.67
Park Service Toolesboro Mounds	\$ 50.08
Park Service Langwood	\$ 5,685.49
Total	\$ 348,271.99

Financial Report -- Land Acquisition (Conservation Reserve)

Balance 7/1/07	\$	43,787.00
Revenue		
Transfer from General Basic	\$	84,591.00
Expenditures		
Chinkapin Project	\$	11,078.00
Chinkapin Wetland Enhancement	\$	45,872.00
Other Improvements	\$	105.00
FEMA repairs	\$	1,450.00
Equipment	\$	26,120.00
Balance in Conservation Reserve 6/30/08	\$	43,753.00

Financial Report -- Resource Enhancement and Protection (REAP)

Balance 7/1/07	\$	27,318.00
Revenue		
State Payment	\$	16,817.84
Interest	\$	375.84
Expenditures		
Improvements	\$	12,000.00
Balance 6/30/08	\$	32,135.84