

LOUISA COUNTY CONSERVATION BOARD

ANNUAL REPORT

July 1, 2006 to June 30, 2007

TO: The Louisa County Board of Supervisors

Following is the annual report of the Louisa County Conservation Board for the fiscal year (July 1, 2006 - June 30, 2007) as prescribed in Chapter 350.3 of the Code of Iowa (1993).

Highlight of FY 07 Accomplishments

- Moved office to former county care facility
- Interpretive Center master plan process completed
- Obtained grant for boat ramp replacement at River Forks Boat access
- Electrical upgrades at Snively Access & Virginia Grove campgrounds
- Increased facility and programming use at Langwood
- Increased use at Chinkapin Bluffs shelter
- Planting of additional acres to native grasses at Cairo Woods

Board Roster

The Louisa County Conservation Board members who served during this reporting period were:

<u>Name</u>	<u>Title</u>	<u>Expiration Date</u>	<u>Meetings Attended</u>
Gene Murray	Member	Dec. 31, 2006 (ended term)	6
Kathy Vance	Secretary/Treasurer	Dec. 31, 2007	11
Doug Brown	Member	Dec. 31, 2008	11
Dave Schweitzer	Member	Dec. 31, 2009	12
Jay Schweitzer	Chair	Dec 31, 2010	13
Brad Moss	Vice-Chair	Dec 31, 2011 (began 1/1/07)	6

Meetings Held

The board held 12 regular meetings and two special meetings during the year. The minutes of the meetings are on file at the Louisa County Conservation Board Office, 12635 County Road G56, Wapello, Iowa, 52653.

Louisa County Conservation Board Staff

The Louisa County Conservation Board maintained six permanent staff positions and five seasonal positions. Three "on-call" staff positions help with staffing for ropes facilitation and substitute Toolesboro interpretation.

The LCCB continued to participate in the Eastern Iowa Conservation Alliance AmeriCorps project. Under the project, the LCCB sponsored four 6-month fulltime and one summer-only AmeriCorps members during 2007. A grant from the Corporation for National Service provided cost share for the program.

In addition, the conservation board used the services of volunteers and community service workers.

LCCB Permanent Employees for FY 07

Name	Title	Anniversary Date
Julie Ohde	Executive Director	06/1985 (PFT)
Katie Dalton	Naturalist/Langwood Director	03/2000 (PFT)
Kathy Dice	Naturalist	01/2001 (PFT – 80 %)
Mary Gish	Office/Museum Manager	02/2001 (PPT – 70%)
Jeff Snyder	Operations Supervisor	10/2006 (PFT)
Kenny Moore	Park Ranger/Technician	10/2006 (PFT – 80%)

LCCB Seasonal, Temporary & On Call Employees for FY 07

Name	Title	Dates Worked
Ernest Gerst	Seasonal maintenance	7/06-8/06(SFT)
Tanner Grimm	Seasonal Maintenance	7/06-8/06(SFT)
Rachel Kelley	Toolesboro Assistant	7/05 – 6/06 (SPT)
Bev Lorack	Toolesboro Assistant	7/05 – 6/06 (SPT)
Charles Weyer	Intern Naturalist	5/06 – 6/06 (SFT)
Bev McCulley	Toolesboro Assistant (Substitute)	7/05 – 6/06 (On-call)
Cindy Klebe	Ropes Facilitator/EE assistant	7/05 – 6/06 (On-call)
Tessa Pugh	Ropes Facilitator/EE assistant	7/05 – 6/06 (On-call)

LCCB AmeriCorps Members for FY 07

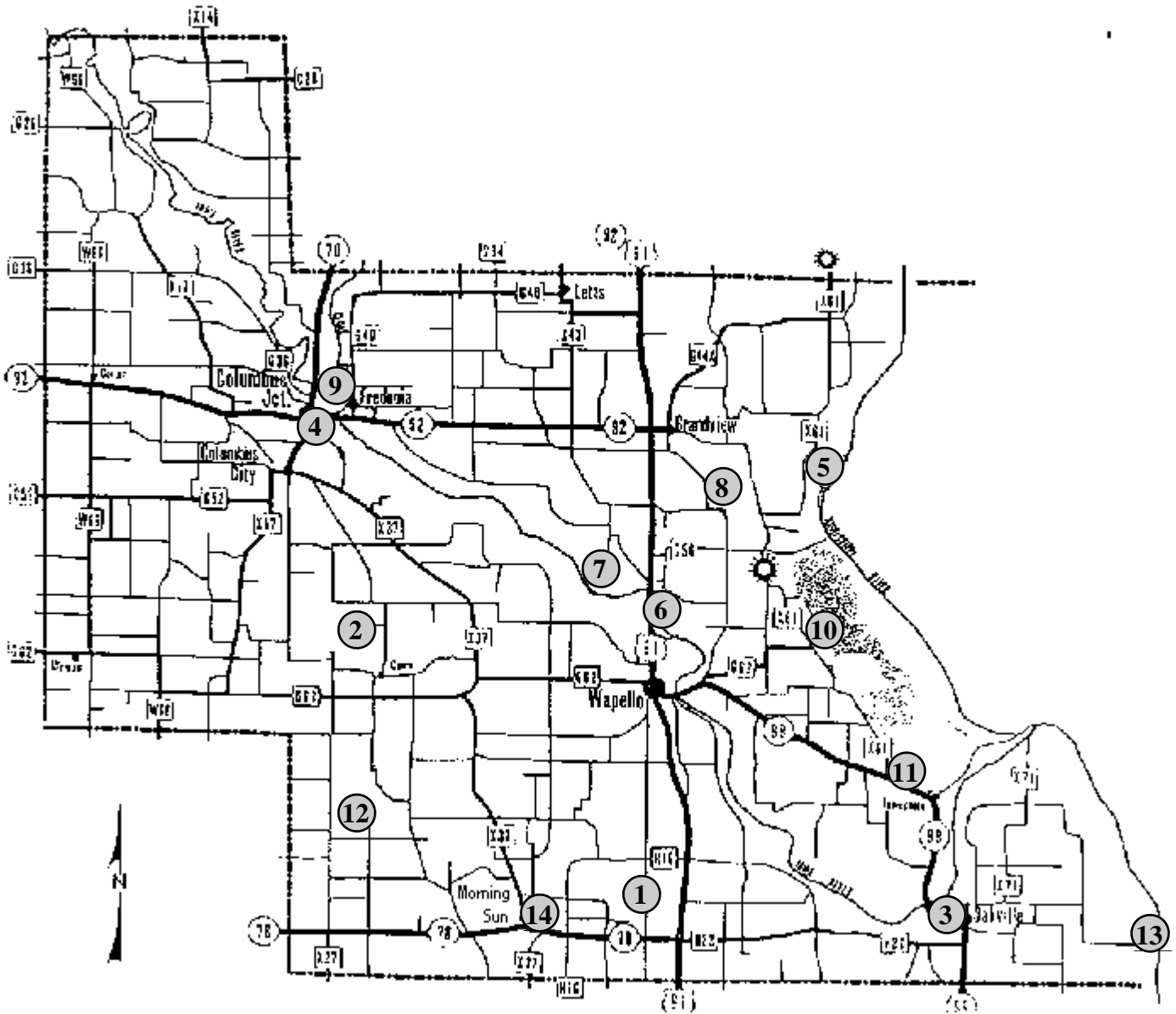
Name	Service	Dates Enrolled
Ernest Gerst	AmeriCorps Natural Resources	03/07-06/07
Tanner Grimm	AmeriCorps Natural Resources	03/07-06/07
Sally Hakes	AmeriCorps Environmental Ed	12/06-6/07
Elizabeth Yoder	AmeriCorps Environmental Ed	03/07-06/07
Mitch Schwietzer	AmeriCorps Natural Resources (Summer only)	05/07-06/07

Definitions

- PFT: Permanent Full Time (at least 32 hours/week, receives full benefits)
- PPT: Permanent Part Time (20-31 hours/week, salaried, receives vacation, sick leave & holidays)
- SFT: Seasonal Full Time (works full time seasonally, no benefits)
- SPT: Seasonal Part Time (works part time, seasonally, no benefits)
- On-Call: works only when needed

Area Inventory

The Louisa County Conservation Board owns and/or manages a total of 14 areas, totaling approximately 2290 acres for outdoor recreation and wildlife benefits. A map and brief description of these areas follows.



Multi-use Recreational Areas

Chinkapin Bluffs Recreation Area - 398 acres

Location: One mile southeast of Columbus Junction, Iowa

Date Acquired: Original 262 acres acquired April 16, 1992; 136-acre addition acquired September 12, 2002; Hoover Nature Trail acquired December 2005

Current management: Multi-use recreation area

Existing facilities: Shelter, several picnic tables, grills, water, portable toilet and trails. The Hoover Nature Trail runs adjacent to the property providing additional biking, hiking and other trail opportunities. A 136-acre wetland was added to the property in FY 03.

Improvements this fiscal year: Work continued on the restroom though it was not completed..

Planned Improvements: Construction of the restroom will be completed along with finishing trails, tree plantings and a sidewalk addition.

Documented use: Six shelter reservations for the year and six LCCB programs.

Flaming Prairie Park - 72 acres

Location: Approximately 15 miles south of Muscatine, Iowa

Date Acquired: Sept. 26, 1978

Current management: For wildlife habitat, camping and other recreational use. Hunting is prohibited.

Existing facilities: Three shelters, camping and picnicking facilities, two latrines, and playground equipment.

Improvements this fiscal year: A new well pump was installed for both camping and day use.

Planned Improvements: Improvements to the campgrounds and other facilities are planned next year.

Documented use for this area: Although complete attendance figures are not available, 787 camper use days were recorded, up 20% from FY 06.

Snively Access Campground - 6 acres

Location: On the west bank of Odessa, approximately four miles east of Wapello, Iowa

Date Acquired: 25-year lease signed with the State of Iowa on May 5, 1985

Current management: For camping and picnicking

Existing facilities: 30 graveled campsites with tables and grills, access road, latrine, water and electrical service

Improvements this fiscal year: Upgrade and expansion of the campground's electrical service was completed.

Planned Improvements: A small day use area may be developed to prevent conflicts with use of camp sites for picnicking and fishing. Water service may be added to the north end

Documented use: Although complete attendance figures are not available, 1,042 camper use days were recorded, down from FY 06.

Virginia Grove Recreation Area - 106 acres

Location: Approximately 10 miles southwest of Wapello, Iowa

Date Acquired: January 7, 1975 (main tract only)

Current management: For multi-use recreation, including hunting, fishing, camping, picnicking, hiking and similar uses

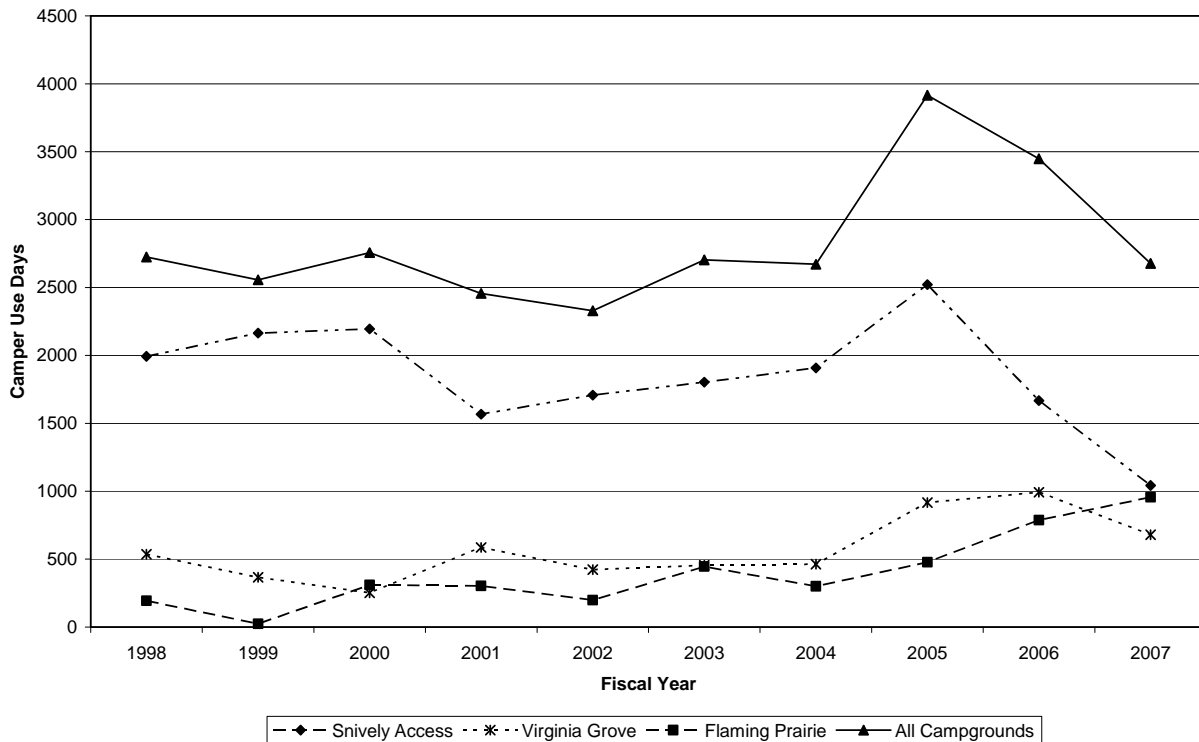
Existing facilities: Two shelters, 11 camp sites (all with access to electricity), latrine, playground equipment, pressurized water well, electrical service, handicapped accessible fishing dock and country schoolhouse. A five-acre pond is also located on the area.

Improvements this fiscal year: Upgrades to the campground and shelter electrical system was completed.

Planned Improvements: Capitol improvement plan will be developed.

Documented use: Complete attendance figures are not available; however, 670 camper-use days were recorded, down from FY 06. Other documented use for this area includes four shelter reservations and 300 participants at six LCCB sponsored programs.

Camper Use Days at LCCB Campgrounds, FY 98 to FY 07



Wildlife Areas

Baird Timber - 18 acres

Location: Five miles south of Wapello, Iowa

Date Acquired: July 6, 1983

Current management: For wildlife purposes and timber improvement management

Existing facilities: Small parking lot

Improvements this fiscal year: None

Planned Improvements: None

Cairo Woods Wildlife Area - 525 acres

Location: Five miles southeast of Columbus Junction, Iowa

Date Acquired: Various dates ranging from March 16, 1985 - June 1, 1987

Current management: For wildlife habitat purposes and compatible recreational uses such as hunting, hiking and berry picking. Some trails are open to equestrian use from May 21 to September 15 each year.

Existing facilities: Three rocked parking lots and trails, including trails marked for equestrian use

Improvements this fiscal year: About 6 acres of native grass mix was planted.

Planned Improvements: Removal of interior fencing is planned. Updating of timber stand improvement plan and habitat management plans are needed.

Indian Slough Wildlife Area - 1,049 acres

Location: Three miles northwest of Wapello, Iowa

Date Acquired: From Nov. 25, 1985 to May 11, 1988

Current management: For wildlife habitat purposes and compatible recreational uses such as hunting, fishing, trapping, and hiking.

Existing facilities: Water control structures, access roads, four parking lots and mowed trails

Improvements this fiscal year: none

Planned Improvements: Efforts will be directed towards wildlife habitat restoration and improvement. Water control structures will continue to be modified to assist in managing water levels.

River Accesses

Cappy Russell Access - 5 acres

Location: On the Iowa River approximately one-half mile west of Oakville, Iowa

Date Acquired: Aug. 1, 1973

Current management: Maintained as a boat access

Existing facilities: Concrete boat ramp, graveled parking lot

Improvements this fiscal year: None

Planned Improvements: None

Highway 61 Fishing Access - 1 acre

Location: Approximately two miles north of Wapello, Iowa on US Highway 61

Date Acquired: October 5, 1989

Current management: Maintained as an access to the Iowa River for fishing. No boat ramp is provided, but light boats can be carried from the parking lot.

Existing facilities: Parking lot and access road

Improvements this fiscal year: None

Planned Improvements: None

River Forks Access - 5 acres

Location: The junction of the Iowa and Cedar Rivers, one mile east of Columbus Junction, Iowa

Date Acquired: Aug. 1, 1973

Current management: Maintained as a boat access, with primitive camping allowed as well as picnicking and fishing.

Existing facilities: Concrete boat ramp, parking lot, access road, grill

Improvements this fiscal year: None

Planned Improvements: Boat ramp will be replaced and parking lot regraded in FY08.

Wykert's Landing – less than 1acre

Location: On the Mississippi east of Oakville, Iowa

Date Acquired: A ten-year Recreation Lease with the Army Corps of Engineers began March 2, 2002

Current management: Maintained as a boat access

Existing facilities: Gravel boat ramp, parking lot and access road

Improvements this fiscal year: None

Planned Improvements: None

Other Areas

Hoover Nature Trail

Location: Property located from north of Columbus Junction to South of Morning Sun; Developed sections at Chinkapin Bluffs and east side of Morning Sun.

Date Acquired: December 2005

Current management: Hiking and biking trails; some areas undeveloped

Existing facilities: one parking area at Chinkapin Bluffs

Improvements this fiscal year: None

Planned Improvements: Signage improvements. May seek development of additional sections at some time. May look at acquiring connecting pieces.

Maintenance Shed - 1 acre

Location: Just outside the west city limits of Wapello, Iowa

Date Acquired: May 4, 1977

Current management: For storage of equipment, materials and as a work site for the field crew

Existing facilities: An equipment storage and work shed, a small storage shed, and an outside nursery cooler

Improvements this fiscal year: None

Planned Improvements: Additional shed is needed.

Toolesboro Indian Mounds and Museum - 6 acres

Location: Approximately 10 miles southeast of Wapello, Iowa

Date Acquired: Annual agreements with State Historical Society of Iowa started on May 19, 1990

Current management: As a national historic site for the preservation and exhibition of the unique cultural history found there

Existing facilities: Two well-preserved burial mounds, a visitor center and a small, restored prairie site

Improvements this fiscal year: Building was painted.

Planned Improvements: Work on the prairie renovation will continue. Plan to continue offering at least one public program per year. Will work with the SHSI to improve marketing of the area.

Documented Use: Over 1,089 2,109 visitors from 36 states and nine foreign countries visited the site in FY 07. Visitors included 288 students and 58 visitors with tour groups. One public program was presented by the LCCB staff.

Langwood Education Center - 92 acres

Location: Three miles east of Grandview, Iowa

Date Acquired: June 1, 2000

Existing facilities: Enclosed lodge with wood-burning stove and air conditioning, unheated two-story A-frame dormitory, bathhouse with showers and restrooms, teams course, high ropes challenge course, septic system, boathouse, canoes, fishing dock, bird viewing blind. In addition, the LCCB manages the adjoining 40-acre property for the Iowa Natural Heritage Foundation, with plans to eventually purchase the area from them. This ground is currently in row crop production.

Current management: For environmental education, outdoor recreation, and challenge programming. Youth group use is encouraged, particularly in conjunction with outdoor education programming, either through the conservation board or other appropriate agency. Additional use includes group use not connected with environmental education and individual fishing from September to April of each year.

Improvements this fiscal year: Electrical lines to all buildings were replaced. New electrical panel was installed in lodge. Work on a master plan for an interpretive center was completed using funding from a National Scenic Byways grant.

Planned Improvements: Look into providing electric hookups for campers. The Langwood Advisory Committee will continue efforts to purchase the adjoining 40-acre property from the Iowa Natural Heritage Foundation. Marketing strategies for increasing Langwood use will be developed and applied.

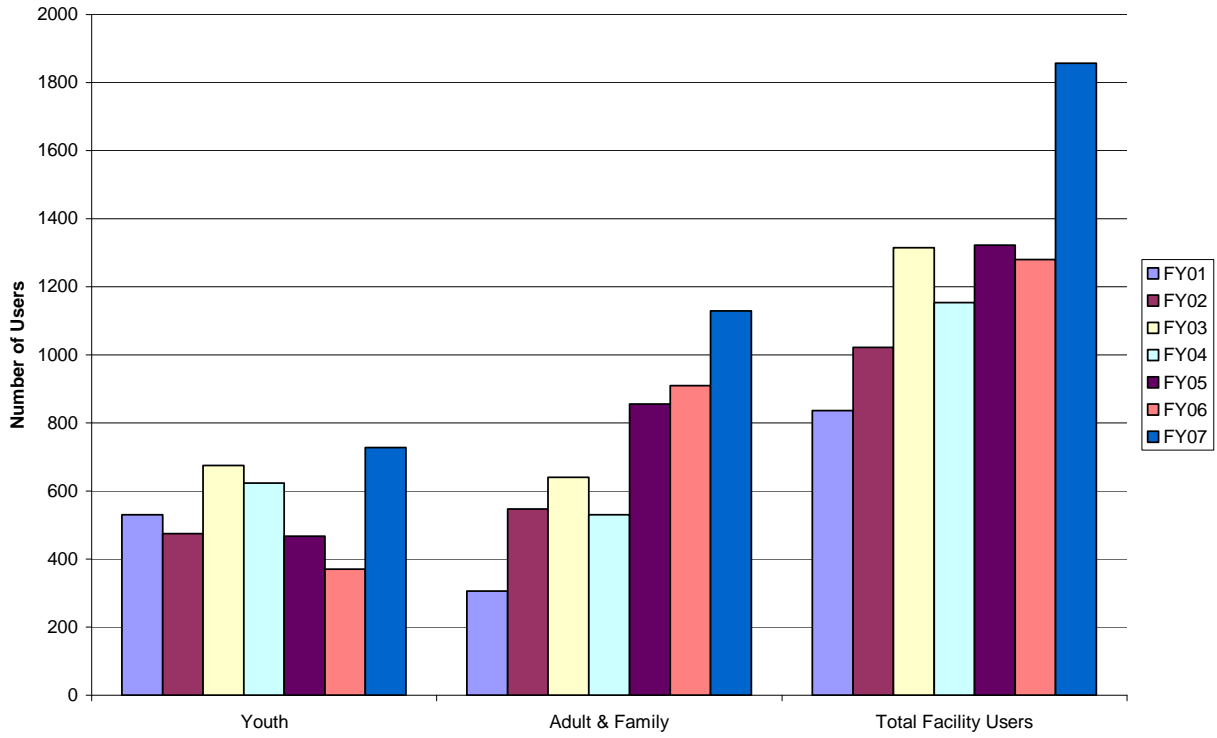
Documented use: The number of participants using Langwood for events (facility use) increased from FY06 by 45%;

The number of participants using the challenge course increased by 26% and the number of participants at school related programs nearly tripled. That was in part due to a change in how out-of-county school use is tracked so earlier years would have shown higher numbers under the new system. Graphs on the following page show Langwood use over the past six years.

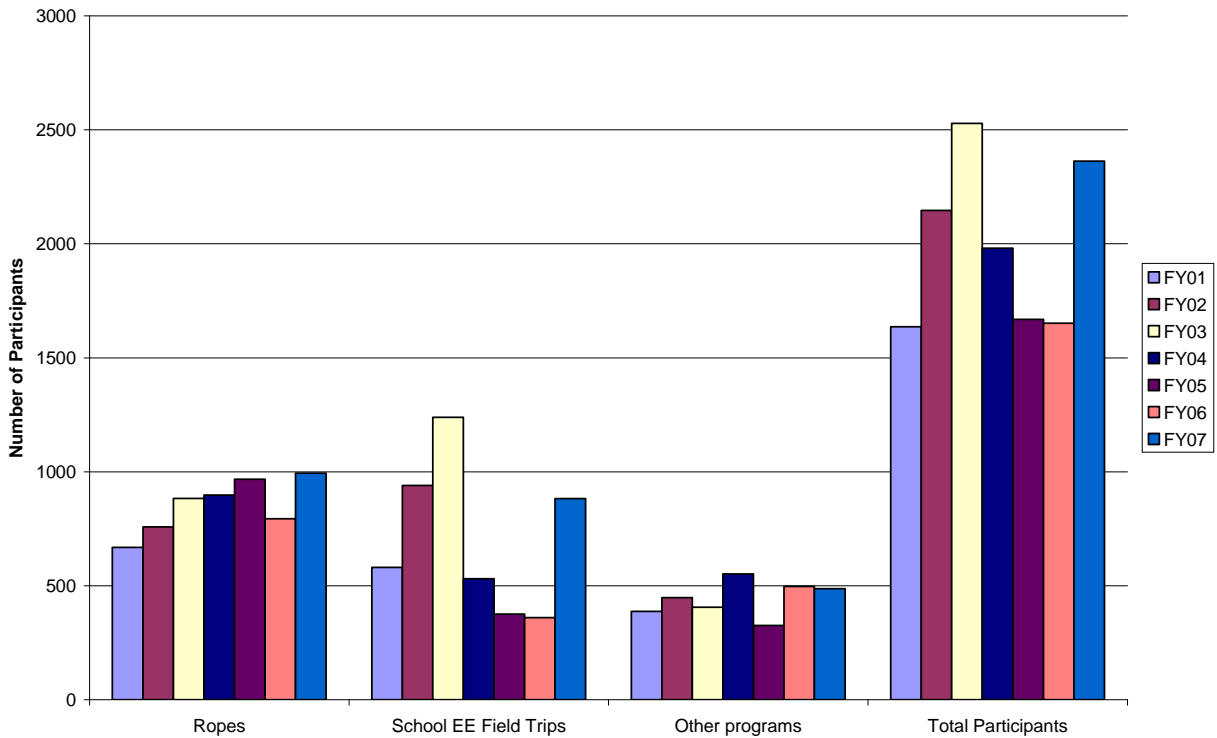
Revenue for facility use, ropes course, public programs and field trips increased by 55% over FY 06.

Langwood visitors came mainly from outside Louisa County – with 68% of facility groups and 90% of challenge course users coming from out of county.

Langwood Facility Users, FY01 - FY07



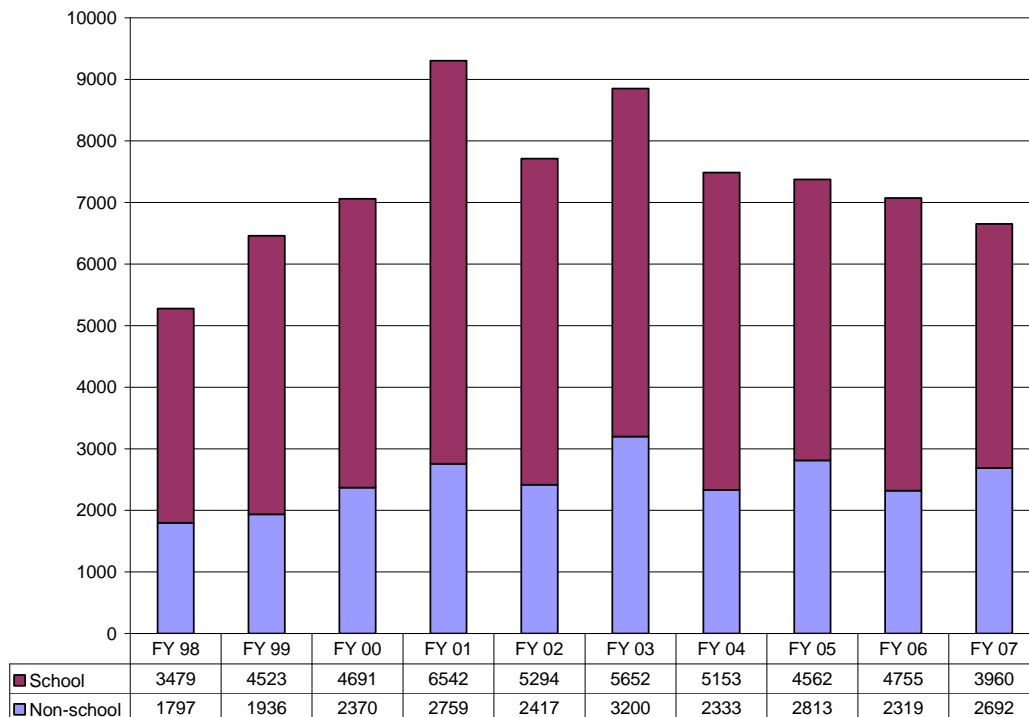
Langwood Program Participants, FY01 - FY07



Environmental Education and Public Relations

The conservation board conducted 293 environmental education programs in FY 07, with a total attendance of 6652. While total groups were up, total attendance showed a slight decline from FY 06.

Participants in Environmental Ed Programs, FY 98 to FY 07



Publicity

- The staff wrote and distributed two issues of the “LCCB Newsletter.” The newsletter incorporated pages for the Iowa Department of Natural Resources, Louisa County Soil and Water Conservation District, Port Louisa National Wildlife Refuge and local non-governmental conservation organizations. The newsletter was both offered online and via email. Just over 1400 subscribers receive the newsletter in the mail while another 100+ receive it via email. The newsletter is also available on the website.
- A website was maintained
- Over 50 news releases were distributed to local media as well as post-publicity photos and articles.
- In addition, several LCCB events and programs were covered as news stories by the local media.
- LCCB continued to be a part of the Naturally Louisa County marketing campaign

Youth Programming

- The LCCB continued to provide a Summer Rec program for the city of Morning Sun.
- The LCCB continued to provide soil and water programs to county schools for the Louisa County Conservation District.
- The LCCB continued to provide organization of two hunter safety courses with funding for meals provided by MidAmerican Energy; Monsanto Off the Job Safety Committee and American Legion, Post 100.
- Summer and winter day camps continued to be popular events.

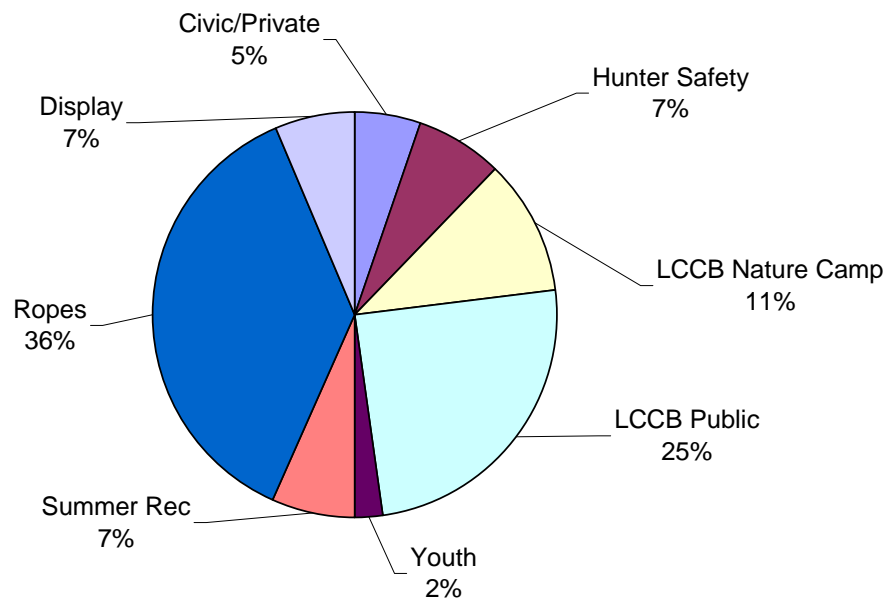
School Programming

- The total number of students and teachers at LCCB environmental education programs was 3960, a decrease of about 800 from FY 06.
- A teacher training workshop was held with Monsanto company, mainly to give teachers training for taking students to Big Sand Mound for field trips

Other Programs

- The number of participants in non-school programs increased by about 375 over FY 06. The ropes program numbers showed the greatest increase with 200 additional participants.
- Had a display at the Louisa County Fair in partnership with the Louisa County Soil & Water Conservation District. Held public programs including a senior citizen field trip to Dubuque, Fish n Fun Day, an archeology program at Toolesboro, the first Family Campout, a public ropes day and helped sponsor a Master Conservationist program.
- The Louisa Solid Waste Commission contracted with the LCCB to provide solid waste education to Louisa County residents.

FY 07 Non-School Programs - Number of Participants (2,692 total)



Cooperative Programs and Agreements

- A. **Iowa Department of Natural Resources** - An agreement was continued for management and development of Snively Access. A fisheries management agreement was continued for the Virginia Grove and Langwood ponds.
- B. **Army Corps of Engineers** - The recreational leases at Flaming Prairie Park and Wykert's Landing were continued.
- C. **Louisa County Historical Society** – A museum management/office agreement between the LCHS and the LCCB was discontinued in September 2006 when the office was moved to a county-owned building.
- D. **City of Morning Sun** - The LCCB continued to provide a summer recreation program in Morning Sun.
- E. **State Historical Society of Iowa** – The museum management and interpretation agreement (annual) for the Toolesboro Historic Site was continued.
- F. **Louisa County Soil & Water Conservation District** - Continued an environmental education services agreement for presenting soil and water conservation programs in area schools.
- G. **Louisa County Solid Waste Commission** – The LCCB continued providing solid waste education through a contract with the LCSWC.
- H. **Tri-Rivers Conservation Foundation** - Continued an informal agreement to cooperate on fundraising efforts and support of the LCCB mission.
- I. **Eastern Iowa Conservation Alliance AmeriCorps Program** – Continued to participate in a cooperative program with 10 other eastern Iowa conservation boards to administer an AmeriCorps program.
- J. **Iowa Natural Heritage Foundation** – Continued management of the adjoining 40-acre tract next to Langwood Education Center with an agreement to eventually purchase the property from the Heritage Foundation.
- K. **Naturally Louisa County** – continued with this effort to market Louisa County's natural resources to state, local and regional visitors. Partners include Iowa Department of Natural Resources, Port Louisa National Wildlife Refuge and Louisa Development Group.

Projects Planned For FY 2008

- A. Continued development on existing county areas may include:
 - 1. Replacement of boat ramp at River Forks Access.
 - 2. Planting of additional acres to native grasses.
 - 3. Improvement of areas currently in native grass plantings.
 - 4. Development of habitat management plan for Indian Slough Wildlife Area.
 - 5. Wetland enhancement at Chinkapin Bluffs.
 - 6. An extreme makeover event at Flaming Prairie Park

- B. Other Plans for FY 08 include:
 - 1. Move forward with plans for the Louisa Interpretive Center at Langwood
 - 2. Partner with other organizations to develop water trails in Louisa County

Attachments

Financial Report

Approved by the Louisa County Conservation Board at the meeting on September 15, 2007

Financial Report--General Basic Operations

Revenue

Camping Fees	\$	7,270.00
Bad check fee	\$	20.00
Camping Coupons	\$	800.00
Flaming Prairie	\$	2,040.00
Snively	\$	3,170.00
Virginia Grove	\$	1,240.00
Donations from Private Sources	\$	11,530.00
Chinkapin Donations	\$	10,000.00
Other donations	\$	1,530.00
Environmental Education	\$	6,531.20
Day camp fees	\$	2,499.00
Hunter Safety Donation	\$	365.00
Nestbox Sales	\$	46.00
Public Program	\$	669.00
Louisa Soil and Water District	\$	1,050.00
Toolesboro Donations	\$	336.00
Solid Waste contract	\$	1,566.20
Equipment Rental	\$	355.00
Land Rent	\$	15,116.11
Langwood	\$	13,699.50
EE Programming	\$	82.50
In-county schools	\$	381.00
Langwood Rental	\$	6,704.00
Ropes course	\$	6,532.00
Misc Federal Grants	\$	85,830.01
Americorps Grant	\$	10,593.01
Scenic Byways	\$	55,600.00
LAWCON - Chinkapin	\$	19,637.00
Miscellaneous Income	\$	5,463.16
Morning Sun Summer Rec Contract	\$	1,284.75
Sale of Obsolete Equipment	\$	-
Shelter Fees	\$	430.00
Chinkapin	\$	225.00
Flaming Prairie	\$	40.00
Virginia Grove	\$	165.00
Toolesboro Contract	\$	9,869.22
Total Revenue	\$	157,378.95

General Basic Expenditures

Salaries

Executive Director	\$	41,915.38
Operations Supervisor	\$	31,223.70
Ranger/Technician	\$	21,795.28
Naturalist	\$	24,646.18
Langwood Program Director	\$	27,760.84
Office Manager	\$	19,100.90
Seasonal Maintenance	\$	5,724.75
Park Staff Americorps	\$	9,374.99
EE Americorps	\$	10,500.00
Ropes facilitators	\$	1,036.14
Toolesboro	\$	4,928.65

FICA

\$ 14,630.04

IPERS

\$ 9,934.63

County Health Insurance

\$ 9,547.17

Americorps Health Insurance

\$ -

Administration

Life Insurance	\$	83.80
Office Supplies	\$	6,836.92
Environmental Education	\$	2,453.57
Official Publications	\$	131.75
Postage	\$	2,140.69
Mileage	\$	405.62
Telephone	\$	3,309.29
School of Instruction	\$	2,305.42
Dues and Memberships	\$	861.00
Licenses, permits	\$	92.00
Property Tax	\$	740.00

Operation and Maintenance

Fuel	\$	10,088.23
Federal Excise Tax	\$	421.62
Minor Equipment	\$	180.51
Summer Rec/Discovery Club	\$	112.19
Uniforms	\$	233.68
Americorps Uniforms	\$	830.95
Americorps School of Instruction	\$	178.78
Electricity	\$	6,803.93
Motor Vehicle Repair	\$	4,990.15
Building Maintenance	\$	662.37
Operating Equipment	\$	1,427.02
Insurance	\$	6,967.00
Workers Comp	\$	8,140.80
Park Maintenance	\$	8,790.33
Langwood Maintenance	\$	8,991.15
Toolesboro Maintenance	\$	140.16
Wildlife Habitat	\$	348.39

Total Expenditures

\$ 310,785.97

Financial Report -- Land Acquisition (Conservation Reserve)

Balance 7/1/06	\$	4,830.87
Revenue		
Transfer from General Basic	\$	105,000.00
Expenditures		
Chinkapin Project	\$	14,174.59
Scenic Byways Project	\$	50,624.00
Other Improvements	\$	1,175.00
Equipment	\$	70.00
Balance in Conservation Reserve 6/30/07	\$	43,787.28

Financial Report -- Resource Enhancement and Protection (REAP)

Balance 7/1/06	\$	31,052.76
Revenue		
State Payment	\$	12,178.00
Interest	\$	761.72
Expenditures		
FICA	\$	173.80
Improvements	\$	14,229.00
Salaries	\$	2,272.00
Balance 6/30/07	\$	27,317.68