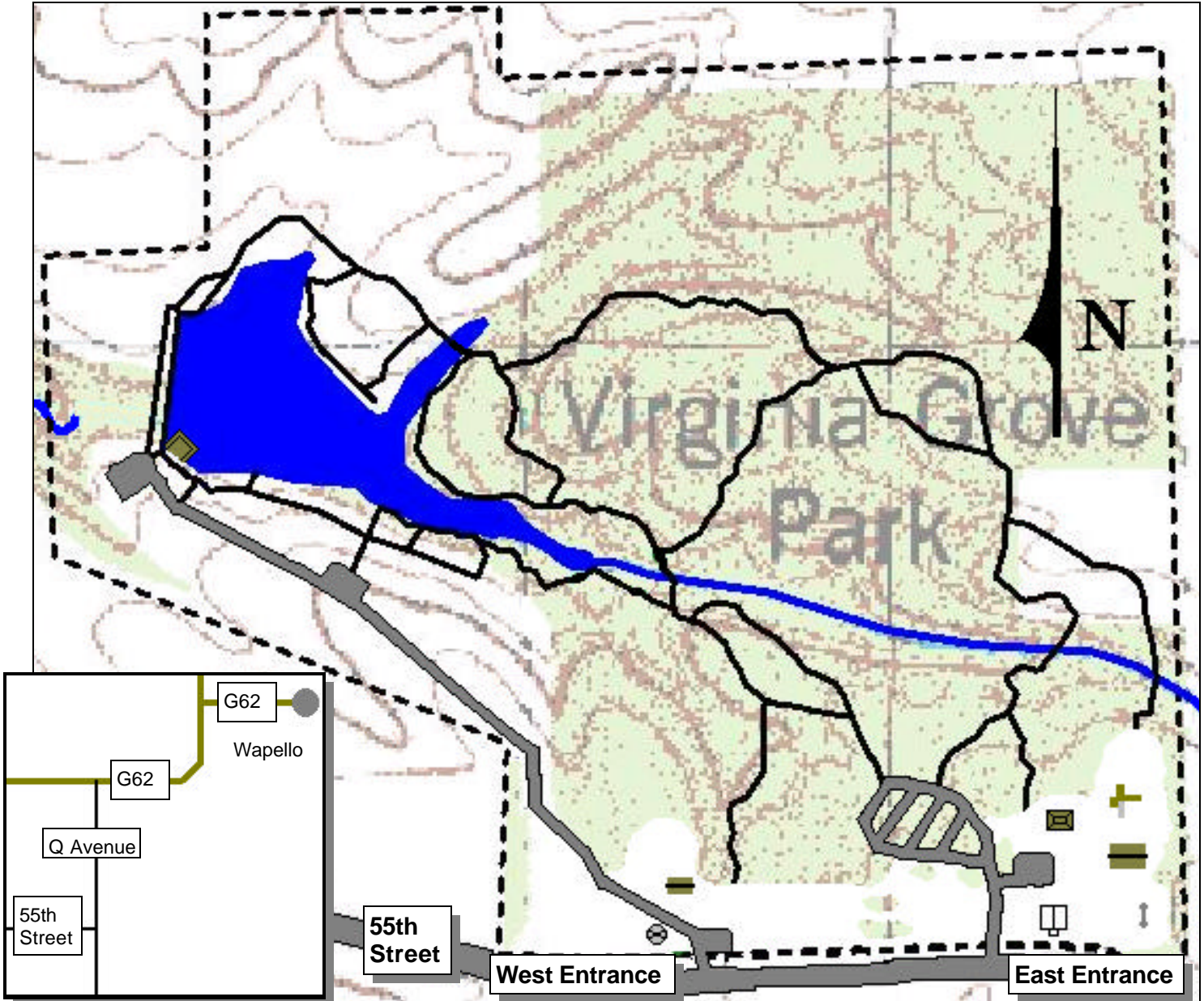


Virginia Grove Recreation Area (Main Unit)



Legend

	Property Line		Picnic Shelter		Old Windmill
	Hiking Trail		Restroom		Handicap Accessible Fishing Dock
	Gravel Road		Old Schoolhouse		Water (Pond)
	Parking Lot		Playground		Open Space
	Campground		Volleyball Court		Forest

Topographic contour interval is 10 feet.

Virginia Grove Recreation Area

Main Unit Address:
20406 55th Street (Zip Code 52640)

Total Acres: 106

Notes: This is a multi-unit area. Camping is \$7.00/night at any one of the 11 electrical sites. Water is shut off during the winter. Hiking, fishing, & hunting are permitted. Both picnic shelters may be reserved. Another unit (Baird Grove) also has a trail for hiking.



For more information, additional maps, or maps to other areas, contact:

Louisa County Conservation Board

P.O. Box 261, 609 James L. Hodges Avenue

Wapello, Iowa 52653-0261

Phone: 319-523-8381

Fax: 319-523-8249

Email: lccb@lccb.org

Visit us online at www.lccb.org for online maps & directions to our areas!